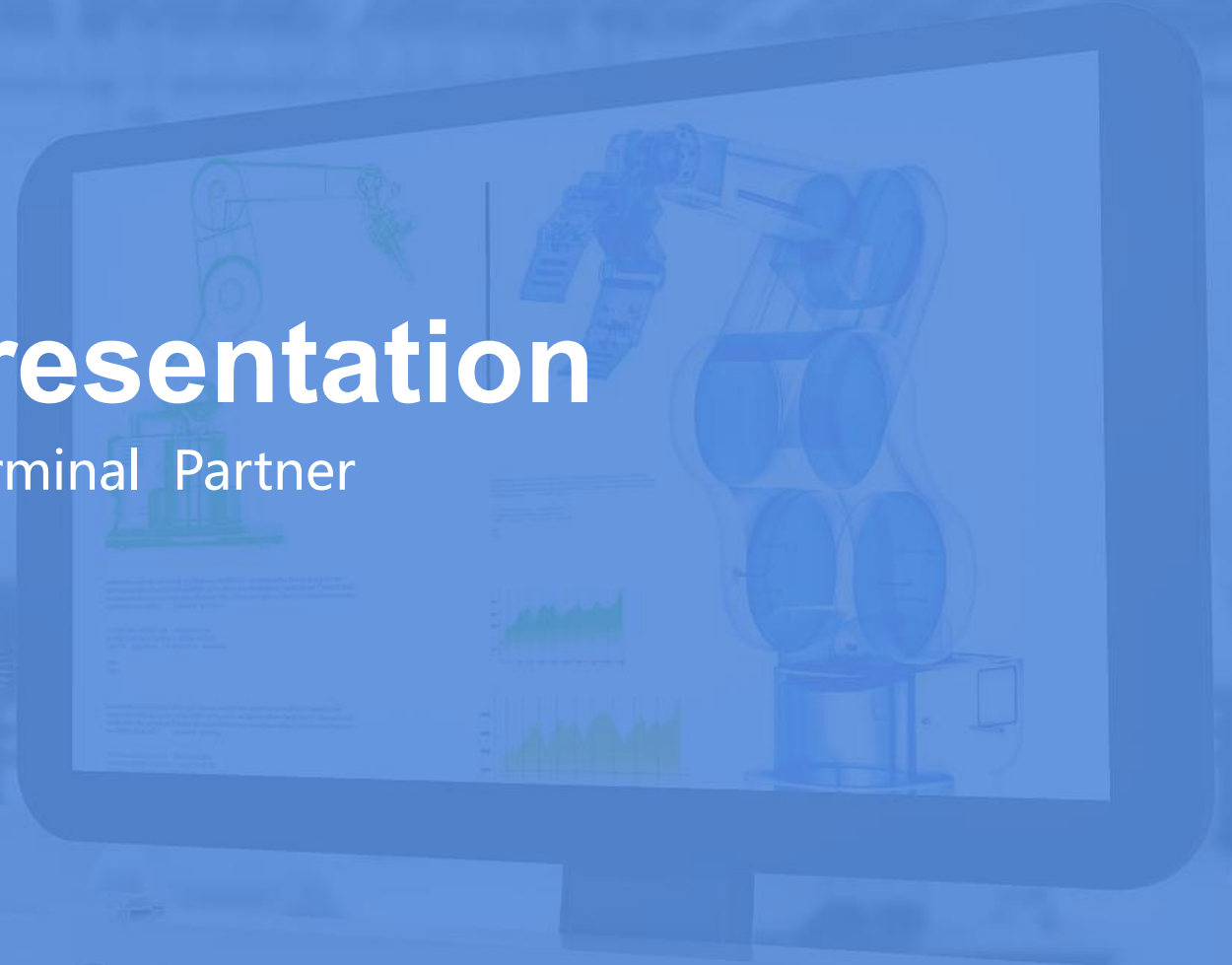




TECHTION
SIMAIRIT

2025 Company Presentation

Your Reliable ECO-Friendly Display Terminal Partner



Shenzhen Tecthon Smart Electronics Co.,Ltd

www.techtionsmart.com

CATALOG

1

Company Profile

- Founding Background
- Development Path
- Core Enterprises
- Organization Chart

2

Product Overview

- AIO Panel PC
- Outdoor E-Paper Display Terminal
- Outdoor Eco-Friendly Display Terminal
- Outdoor AIO Display Terminal

3

Product Applications

- Smart Industry
- Smart Transportation

4

Production Introduction

- Production Workshop
- Quality Policy
- Reliability Test

5

Company Advantage

- Product Qualification / Patent
- Efficient Service Timeliness
- Customization Service
- Upstream Brand Partners

6

Company Culture

- Vision
- Business Philosophy
- Mission
- Management Philosophy
- Core Values
- R&D Philosophy

01



TECHTION
SIMIARIT

Company Profile

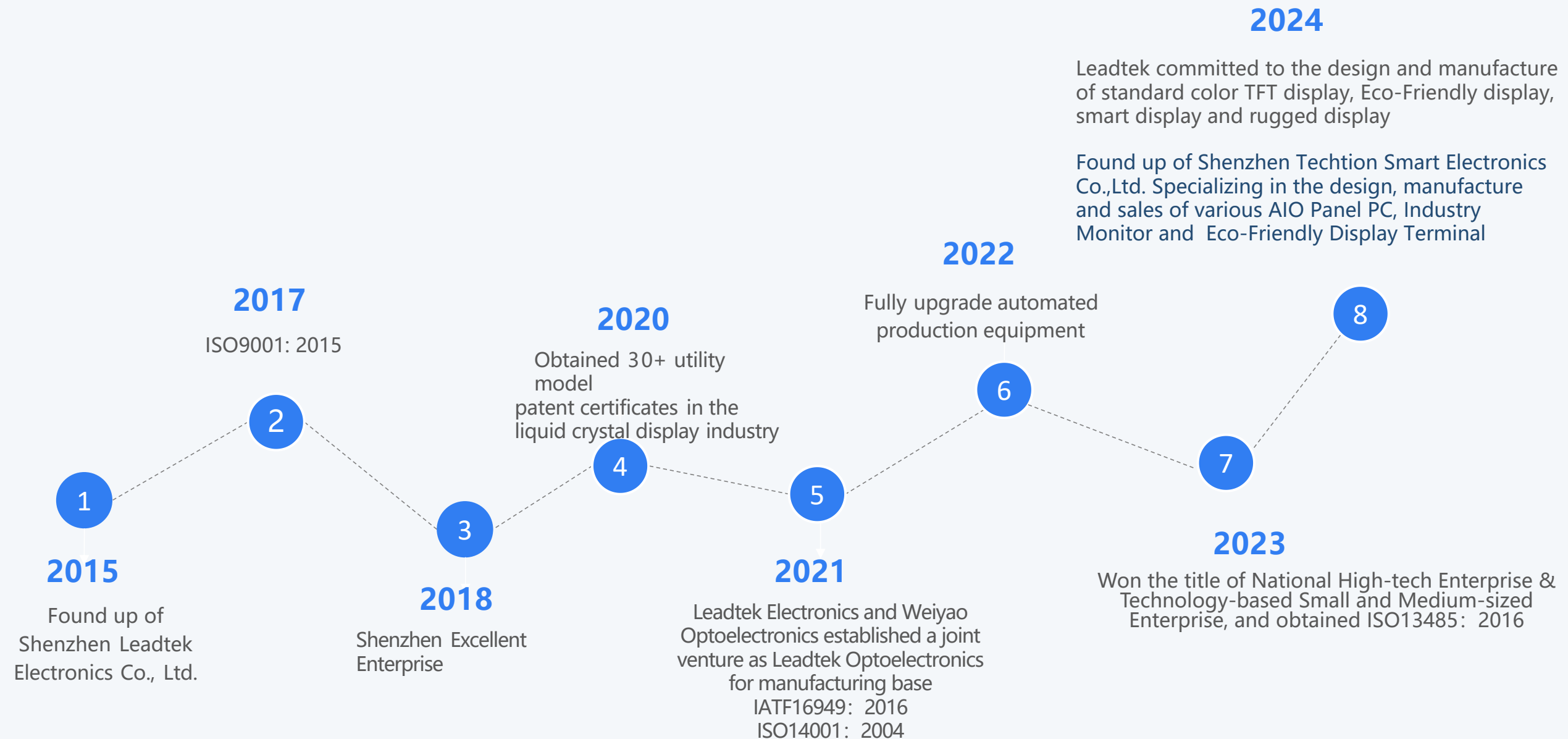
Founding Background

Techtion Smart is affiliated to Shenzhen Leadtek Electronics Co., Ltd. (referred to as Leadtek), and is the complete machine division founded by Leadtek in 2024. Relying on the technology, resources and management experience accumulated by Leadtek since its establishment in 2015, Techtion Smart provides customers with tailor-made low-carbon and environmentally friendly touch display terminal solutions.

Our strategic positioning: to accelerate the digital transformation of industries in various fields with low-carbon, energy-saving and eye-protection new display technologies, and to promote digital, economic innovation and sustainable development. We design, manufacture and sell various AIO Panel PC, Industry Monitor and Eco-Friendly Display Terminal for vertical markets, with sizes ranging from 7.0 inch to 110 inch. Our products are mainly used in smart industry and smart transportation fields.



Development Path



Core Enterprises

Shenzhen Leadtek Electronics Co., Ltd

Founded in 2015

Major Business

R&D and sales of Standard Color TFT Display, Rugged Display, Eco-Friendly Display and Smart Display from 1.3 inch to 21.5 inch

Address

Room 902, 9th Floor, Shenzhou Tianyun Building, Bell Road, Bantian Street, Longgang District, Shenzhen, China

1

Shenzhen Leadtek Optoelectronics Co., Ltd

(a joint venture of Leadtek Electronics and Weiyao Optoelectronics)

Founded in 2021

Major Business

Production and manufacturing of Standard Color TFT Display, Rugged Display, Eco-Friendly Display and Smart Display from 1.3 inch to 21.5 inch

Address

3rd Floor, Building 4, Zhipeng Industrial Park, Fuyuan 1st Road, Heping Village, Baoan District, Shenzhen,China

2

Shenzhen Leadtek Investment Partnership

Founded in 2022

Major Business

operating a common business, joint investment, partnership operation, profit sharing

Address

Room 902, 9th Floor, Shenzhou Tianyun Building, Bell Road, Bantian Street, Longgang District, Shenzhen, China

3

Shenzhen Techtion Smart Electronics Co.,Ltd

Founded in 2024

Major Business

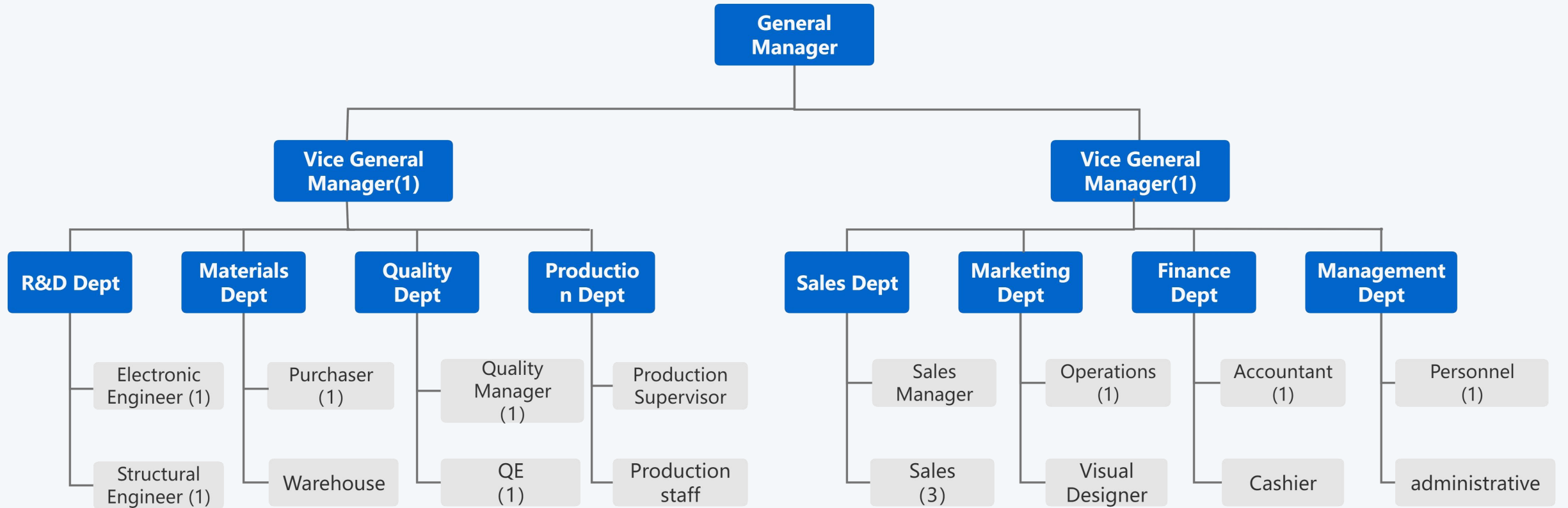
Design, manufacture and sales of various AIO Panel PC, Industry Monitor and Eco-Friendly Display Terminal

Address

Room 902, 9th Floor, Shenzhou Tianyun Building, Bell Road, Bantian Street, Longgang District, Shenzhen, China

4

Organization Chart



02



TECHTION
SIMIARIT

Product Overview

Product Overview



Smart Industry

AIO Panel PC

7~21.5 inch

- High temperature
- Flexible installation
- Multiple interfaces
- Front panel IP65
- Capacitive/resistive touch
- Fully customized

Smart Transportation

Outdoor E-Paper Display Terminal

13.3/28/31.2 inch

- Low power consumption
- Energy saving
- Eye protection
- Wide temperature
- OCA Bonding
- UV resistant
- IP65
- IK08

Outdoor Eco-Friendly Display Terminal

7.8/10.1/21.5/23.8/28/32/43/55 inch

- Low power consumption
- Energy saving
- Eye protection
- Wide temperature
- OCA Bonding
- UV resistant
- IP65
- IK08

Outdoor AIO Display Terminal (Local Dimming)

32/43/55 inch

- High brightness
- Dynamic backlight
- Low power consumption
- Energy saving
- High color gamut
- Wide temperature
- IP66
- IK10

Size

Feature

Smart Industry

Strong, shock-resistant, anti-interference, and corrosion-resistant

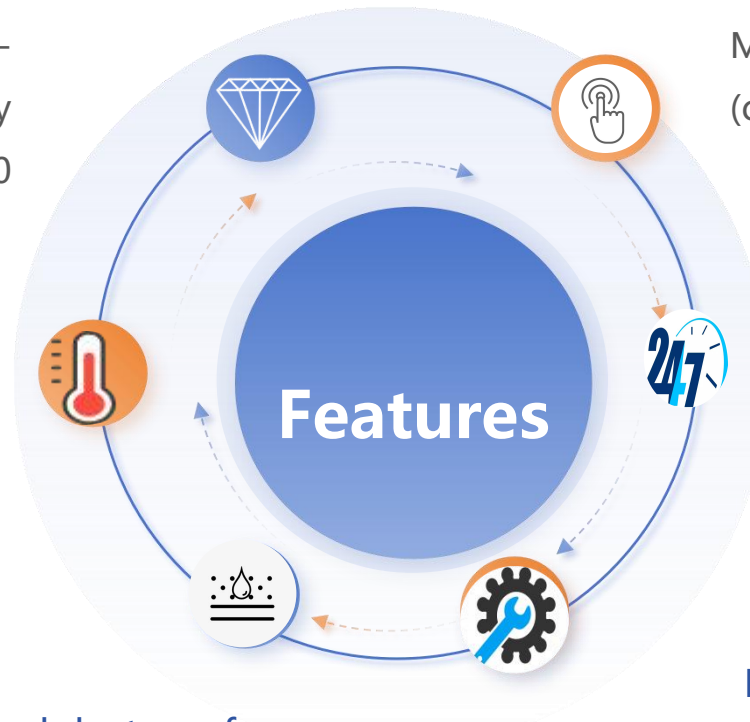
Industrial grade protection, made of die-cast aluminum or stainless steel, fully enclosed structure, front panel IK03-IK10

High temperature resistance

Able to work normally in high and low temperature environments, adapting to various harsh conditions in industrial production processes

Waterproof and dustproof

Conventional machine front panel IP65 waterproof and dustproof
Stainless steel machine IP67-69K waterproof and dustproof



Human-computer interaction

Multi-point capacitive / resistive touch (can be waterproof touch)

Long service life

Industrial-grade panel, 7*24 hours operation, service life up to 50,000 hours.

Flexible installation

Open structure/embedded/wall-mounted/desktop/hanging wall

Smart Industry



Embedded (Panel Mounted)



Open Frame

- Regular size: 7/8/10.1/10.4/12.1/13.3/15.6/18.5/21.5 inches
- Touch: capacitive touch/resistive touch/non-touch
- Brightness: 300-1000nits
- Regular motherboard solution:
 1. Monitor
 2. ARM architecture (RK3568/RK3288/RK3399/RK3588)
 3. X86 architecture (J1900/J4125/J6412, Intel I3/I5/I7)
- System (foreign): Android/Windows/Linux (Debian, Ubuntu)
- Bonding method: air bonding/oca bonding
- Product features: fully enclosed fanless, 2.5mm low-step sink (perfect embedding fit), strong and shock-resistant, strong heat dissipation, anti-interference, wide temperature range, pure flat IP65, 7*24H, flexible installation.
- Customizable: size/appearance/touch/cover (such as: AG)/brightness/function/interface/IK level
- Product application: industrial automation equipment/AGV smart car/intelligent production line/intelligent robot



VESA Mount

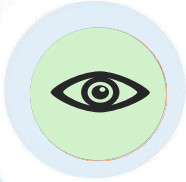
- Regular size: 15.6/18.5/21.5/23.8/27/32/43/55 inches
- Touch: capacitive touch/resistive touch/non-touch
- Regular motherboard solution:
 1. Monitor
 2. ARM architecture (RK3568/RK3288/RK3399/RK3588)
 3. X86 architecture (J1900/J4125/J6412, Intel I3/I5/I7)
- System (foreign): Android/Windows/Linux (Debian, Ubuntu)
- Brightness: 300-1000nits
- Bonding method: air bonding/oqa bonding
- Product features: fully enclosed one-piece die-cast back shell, strong and shock-resistant, strong heat dissipation, anti-interference, wide temperature, flat IP65, 7*24H, flexible installation
- Customizable: size/appearance/touch/cover (such as AG)/brightness/function/interface/IK level
- Product application: industrial automation equipment/intelligent production line



Stainless Steel Series

- Regular size: 8/10.1/12.1/13.3/15/15.6/17.3/19/21.5/23.8/32 inches
- Touch: capacitive touch/resistive touch/non-touch
- Regular motherboard solution:
 1. Monitor
 2. ARM architecture (RK3568/RK3288/RK3399/RK3588)
 3. X86 architecture (J1900/J4125/J6412, Intel I3/I5/I7)
- System (foreign): Android/Windows/Linux (Debian, Ubuntu)
- Brightness: 300-1000nits
- Bonding method: air bonding/oca bonding
- Product features: SUS304 stainless steel material, IP67 dustproof and waterproof, aviation socket, corrosion resistance, high temperature resistance, anti-interference
- Customizable: size/appearance/touch/cover (such as AG)/brightness/function/interface/IK level
- Product application: special environments, such as: food processing plants, marine operations, water treatment plants, pharmaceutical plants, meat slaughterhouses, ports, oil fields, chemical plants, etc.

Features



Readable in sunlight, eye protection

Reflective LCD screen, no backlight (blue light) design, reduces the damage of blue light to the eyes.



Low power consumption, energy saving

Automatic light sensing, green energy saving, front light design, supports solar power supply.



Waterproof, dustproof, lightning proof

The whole machine adopts waterproof and dustproof design, up to IP66, with built-in temperature controller, leakage switch and lightning arrester.

Wide temperature range

All raw materials are made of high and low temperature resistant materials, which can work normally in high and low temperature environments and adapt to various harsh outdoor conditions.

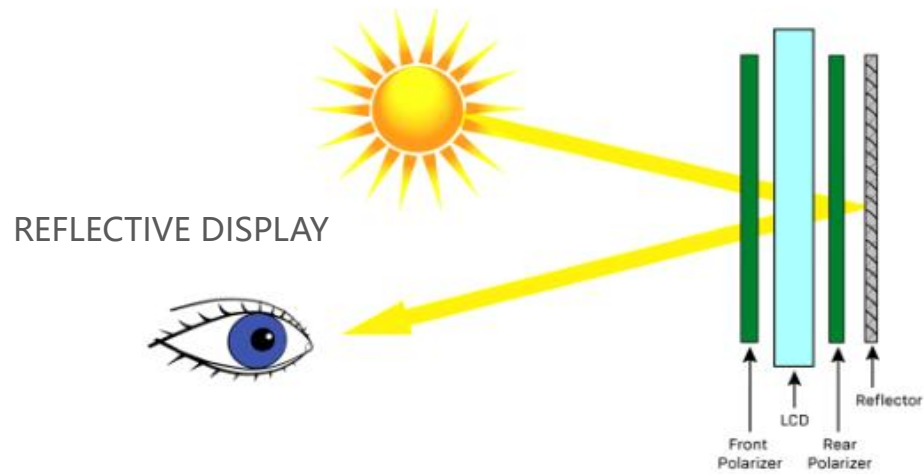


Strong heat dissipation performance

The whole machine has built-in multiple sets of fan groups direct ventilation and cooling system, and adopts professional and special air duct cooling design.

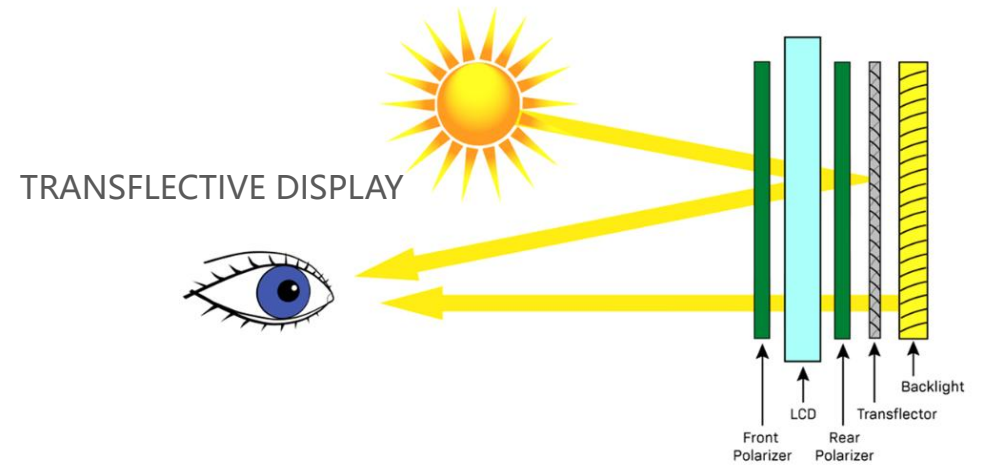


Reflective LCD work by using a reflective layer along with the polarizing filter, to reflect the light back to the user's eyes instead of emitting light from a backlight. The liquid crystal layer modulates the amount of light that is reflected back, creating the desired image.



Reflective LCD are great for outdoor or sunlight-readable applications where the device is exposed to direct sunlight. The most common devices using reflective LCDs are outdoor applications such as GPS devices and portable devices such as e-readers, camera viewfinders, and digital watches.

In a transflective LCD, a backlight is used to illuminate the screen in low-light conditions, such as indoors or at night. In bright light conditions, such as outdoors or direct sunlight, the screen can be viewed by reflecting ambient light off the surface of the LCD.



Transflective LCD are commonly used in industrial and medical equipment, where it's essential to have high visibility in any lighting conditions. They are also widely used in marine, military, and aviation applications where the operator needs to see the display in bright and low light conditions.

Smart Transportation



Electronic bus stop sign

Eco-Friendly Display: 10.1/15.6/21.5/23.8/28/32/43/55
E-Paper Display: 13.3/28/31.2 inch
TFT-LCD: 28.6/32/43/55/65/75/86/98 inch



Parking fee payment device display

Eco-Friendly Display:
7.8/10.1



Charging pile display

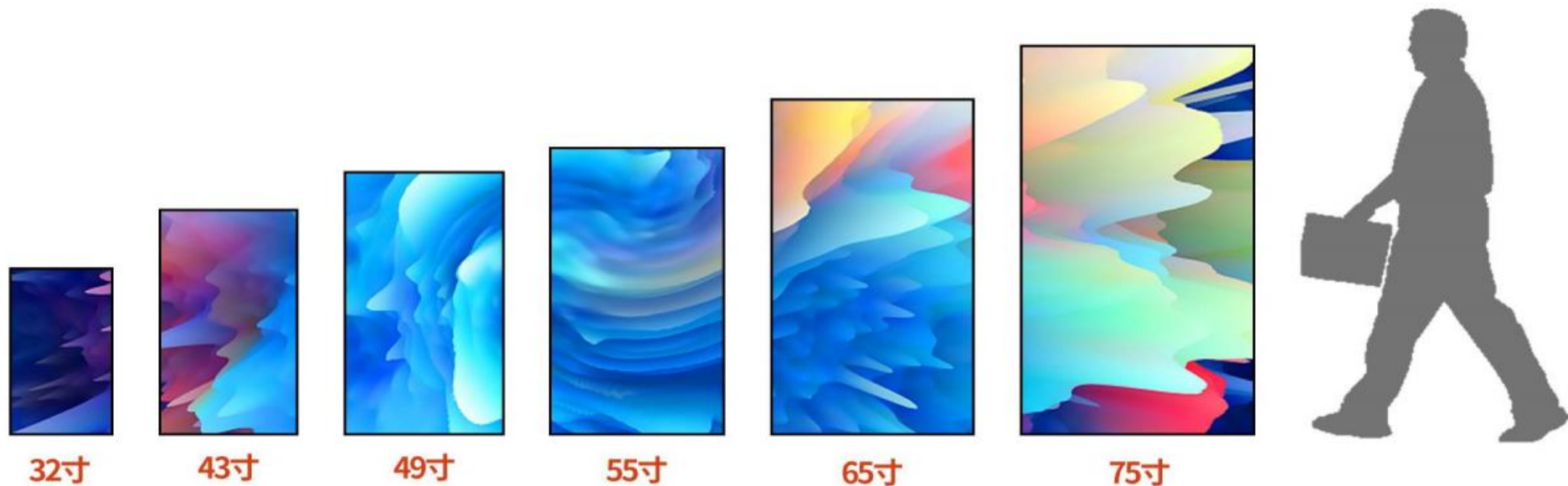
Eco-Friendly Display:
7.8/10.1/15.6/21.5/32/43



Smart light pole display

Eco-Friendly Display: 32/43

Outdoor High Brightness Full Laminated Display



- Conventional size: 32" /43" /49" /55" /65" /75"
- Conventional motherboard solution:
 1. Display
 2. ARM architecture (RK3568/RK3288/RK3566)
 3. X86 architecture (Intel I3/I5/I7)
- System (foreign): Android/Windows/Linux (Debian, Ubuntu)
- Ultra-high brightness: 2500-3500nits
- Product features: full lamination, IP66, 5MM tempered glass (IK10), built-in temperature controller, leakage switch, lightning arrester, aviation plug interface.
- Customizable: waterproof touch/AG/AR/anti-infrared/anti-ultraviolet/appearance structure/brightness
- Product application: outdoor commercial

03



TECHTION
SIMIARIT

Product Applications

Smart Industry

Definition

Smart industry will continuously integrate various terminals with environmental perception capabilities, computing models based on ubiquitous technologies, mobile communications, etc. into all aspects of industrial production, greatly improving manufacturing efficiency, improving product quality, reducing product costs and resource consumption, and elevating traditional industries to a new stage of intelligence, informatization, and digitalization.



The role of the display

As an indispensable part of the intelligent manufacturing industry, industrial display screens are the bridge between people and machines, systems and data, as well as important interfaces of modern industrial control systems and the windows and heart of industrial automation. They can also improve manufacturing efficiency, product quality, and reduce product costs and resource consumption.

Smart Manufacturing Applications



CNC Machine tool equipment



Industrial visual inspection equipment



Factory Intelligent Application Production Line



Industrial automation robot arm matching



Military and heavy industry equipment



Industrial electrical equipment

Smart City Applications



Intelligent garbage sorting station



Radio Frequency Identification



Convenient government self-service terminal



Self-service terminal



Self-service vending machine



Self-service takeaway cabinet



Self-service express lockers

Special Environment Applications



Ships, Maritime



Laboratory



Pharmaceutical Factory



Food Processing Plants

Smart Transportation

Definition

Smart transportation is based on intelligent transportation, integrating new technologies such as the Internet of Things, cloud computing, big data, and mobile Internet. It provides traffic information services with real-time traffic data by collecting traffic information. It makes extensive use of data processing technologies such as data models and data mining to achieve the systematic, real-time, interactive information exchange, and extensive services of smart transportation.



The role of the display

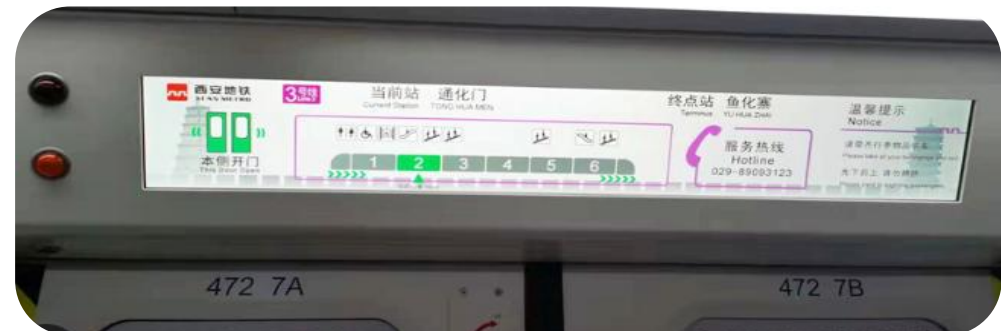
As a carrier for displaying real-time traffic data information, the display screen is not only a screen for displaying data, but also the "smart eye" of urban traffic. It can collect, process and analyze data from various traffic nodes in real time, provide decision-making basis for managers, and provide citizens with a more convenient and safe travel environment.

Smart Transportation Applications

Bus Guidance Display



Subway Guidance Display



Smart Transportation Applications

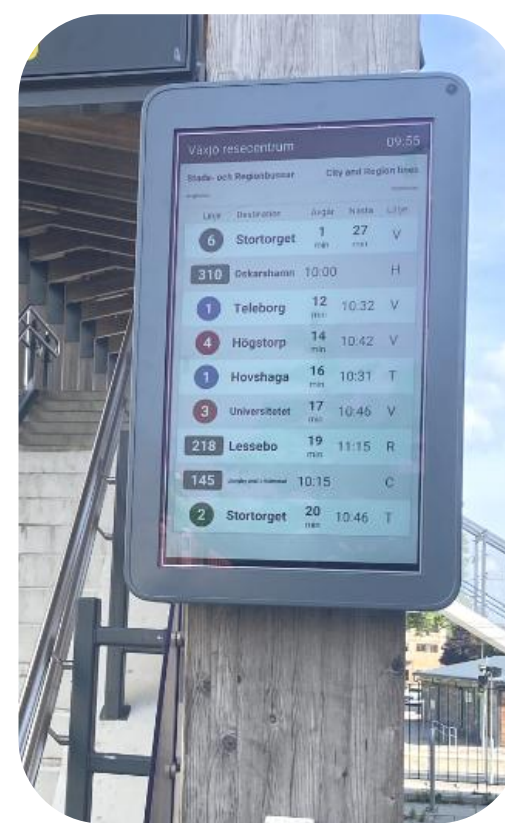
Electronic bus stop sign



13.3" 1200x1600
Eco-Friendly Display



55.0" 1080x1920
TFT LCD



32.0" 1080x1920
TFT LCD



31.2" 1440x2560
E-Paper Display

Smart Transportation Applications

Parking fee collection equipment



Smart light pole display



Smart charging pile



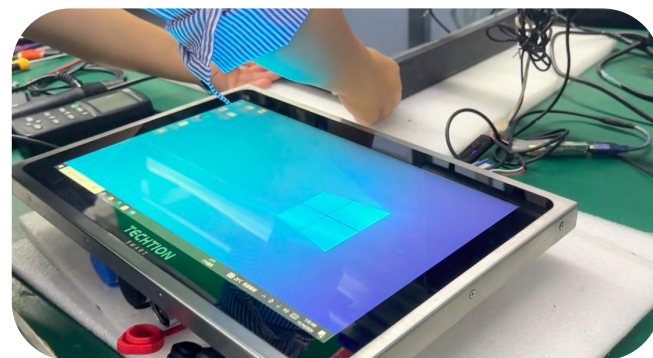
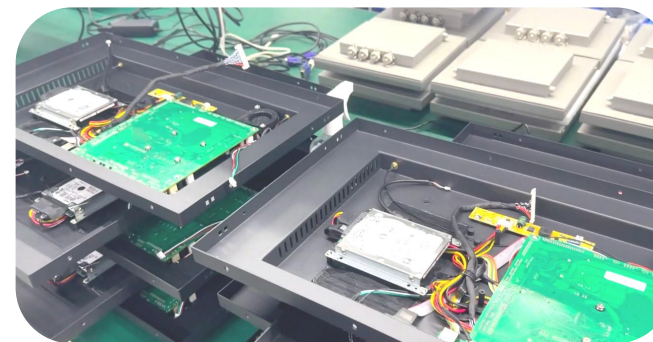
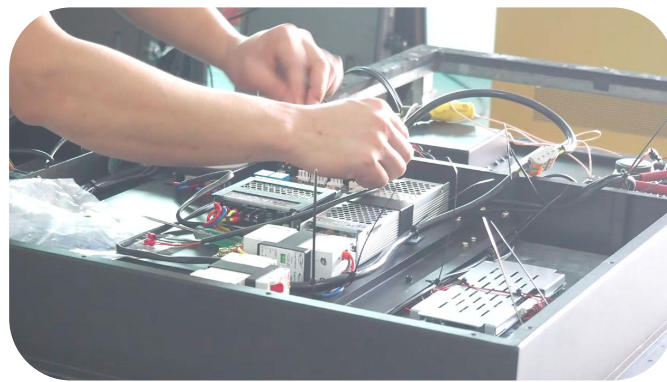
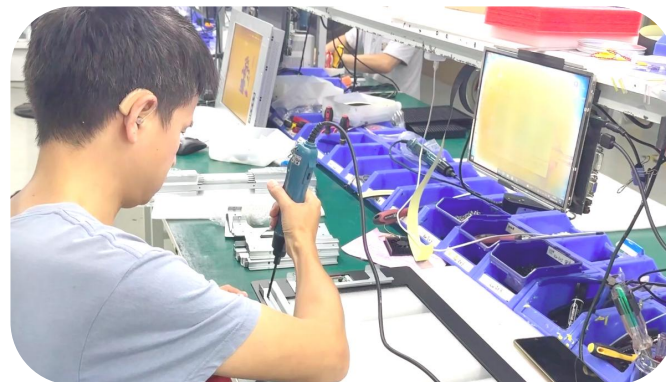
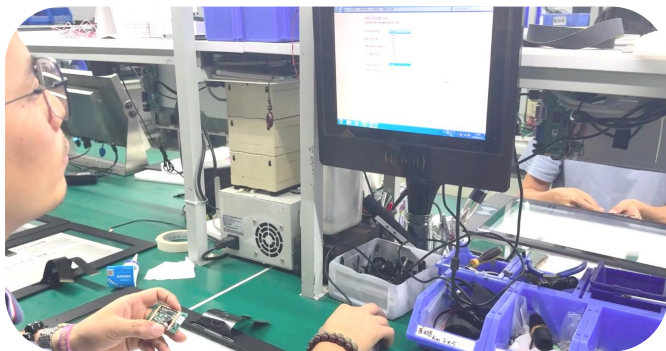
04



TECHTION
SIMIARIT

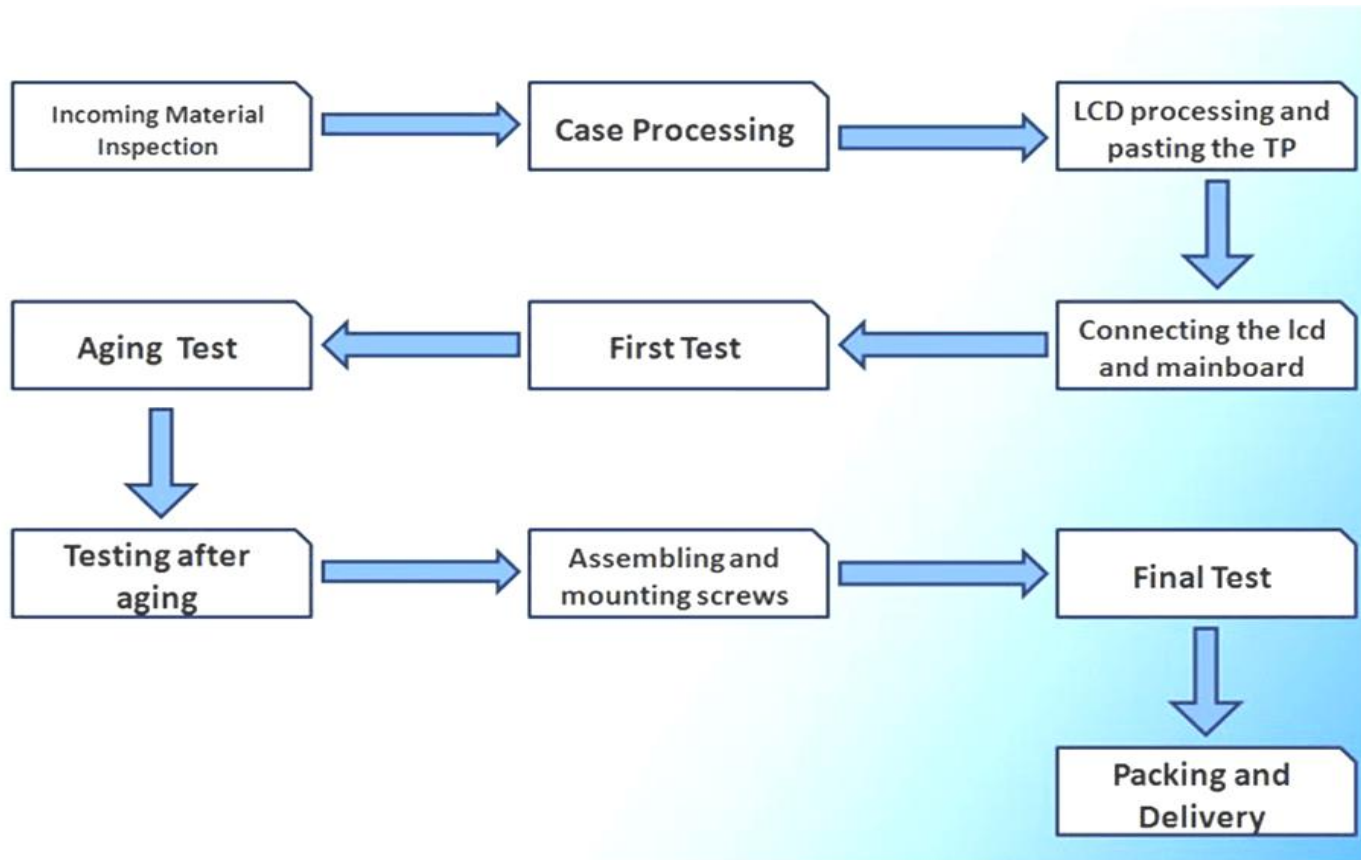
Production Introduction

Production Workshop

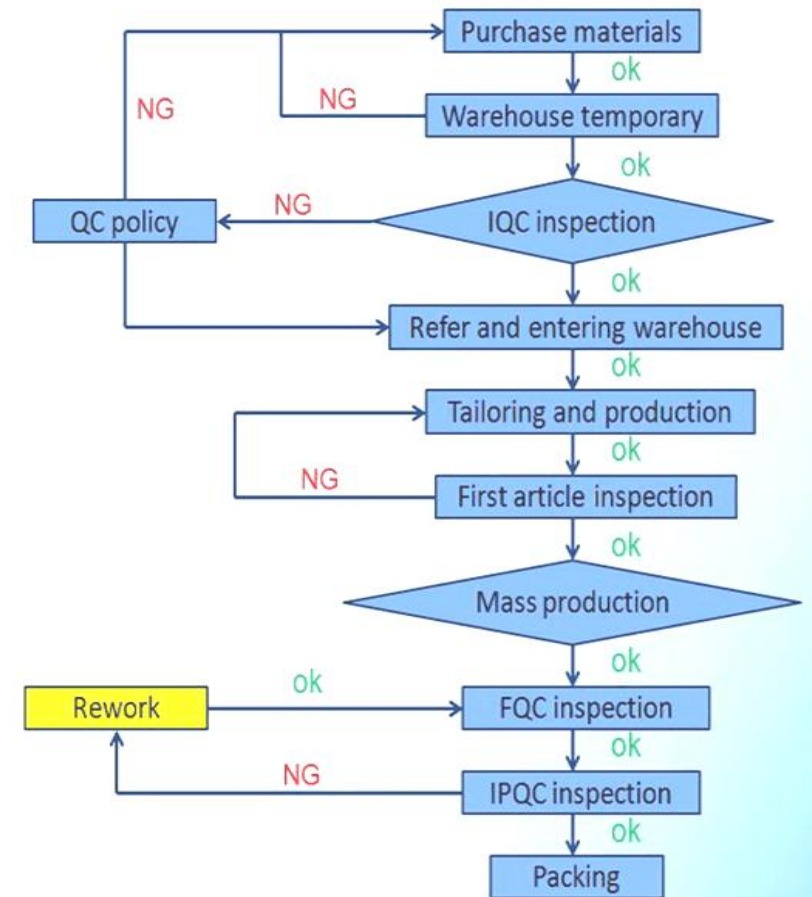


Quality Control

Production Process



Quality Control Process



Reliability Test



DC voltage regulator/
electronic load



Withstand voltage test



Static Electricity Test



48 hours aging test



Temperature and humidity
test



Drop test



Simulated car
vibration test



Salt spray test



Programmable rain
test



Programmable high and low
temperature resistance test

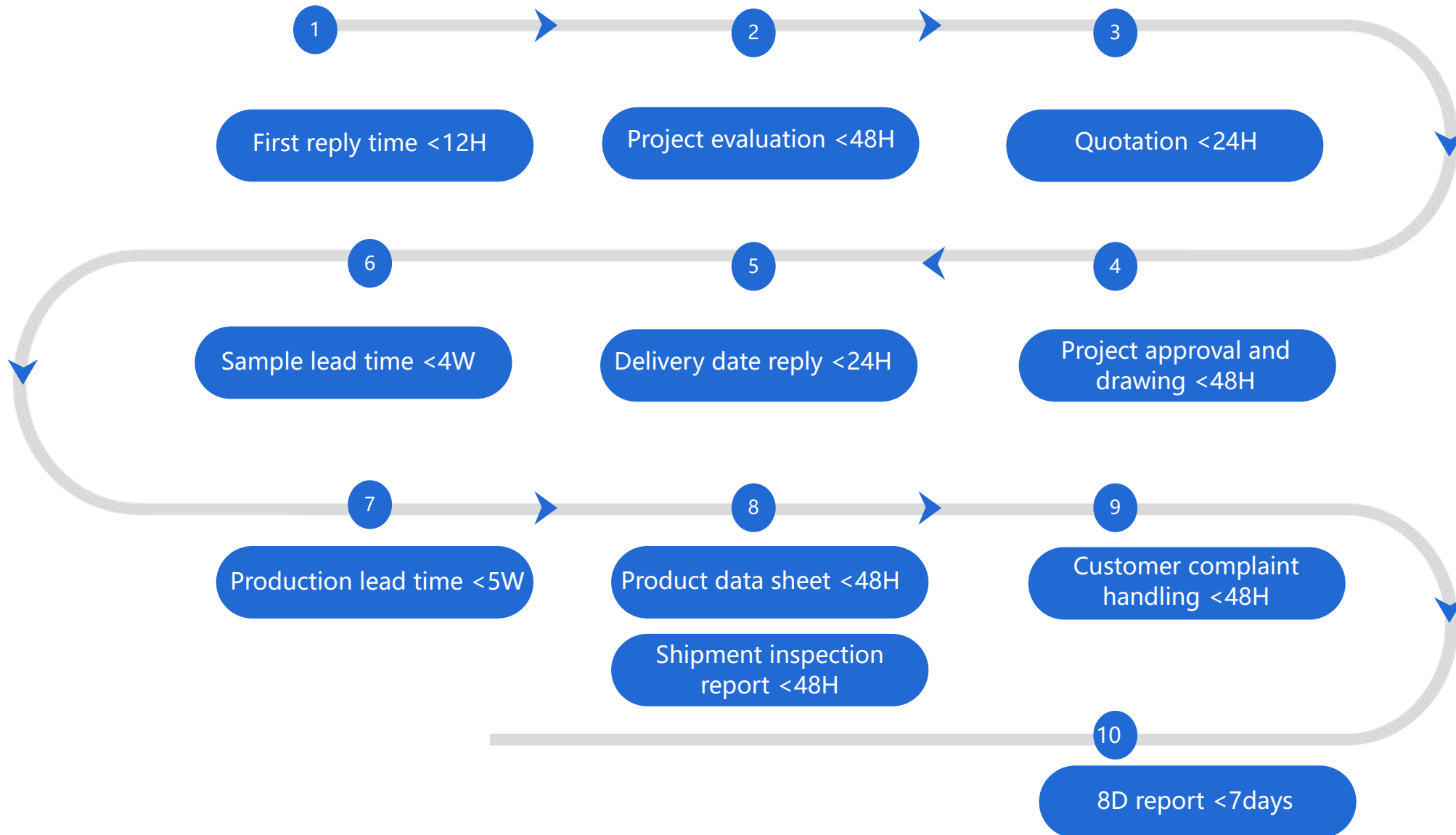
05



TECHTION
SIMIARIT

Company Advantage

Efficient Service Timeliness



Customization Service



Wide Temperature
-20°C-70°C



High Brightness
1000-1500cd/m2



Touch Screen
Resistive/Capacitive/IR



Light Sensor
Auto dimming



Anti Glare



Vandal Proof
IPS, FHD Optional



Dimension
Customizable



Optical Bonding
Optional



System/Software
Customizable



Appearance
Aesthetic design



LOGO
logo sticker/silk printing



Mounting
Customizable



Anti-EMI
EMI test



Waterproof
IP65/IP67 optional



Shock-Proof
For special environment



Anti-corrosion
Special environment



Relay
conversion circuit



I/O Ports
Add I/O ports at requests



Wide Voltage
Anti voltage instability



Configuration
CPU/RAM/HDD/SSD

Customization Service



GPS
Global positioning



3G/4G Module
Wireless internet



Card Reader
Magnetic strips/IC



Infrared Sensor
Human IR induction



RFID Card Reader
Read IC/ID card



Built-in Camera
Auto focusing 200/500W



Thermal Printer
50/80mm receipts



ID Card Reader
Read ID information



WIFI Module
802.11b/a/g/n/ac optional



Fingerprint Reader
Attendance system



NFC Card Reader
Payment/access control



Bluetooth
Wireless data exchanging



Gravity Sensor
Screen H/V rotation



Built-in Battery
UPS



Built-in Microphone
Man-machine dialogue



Palmprint recognition
Biometric technology

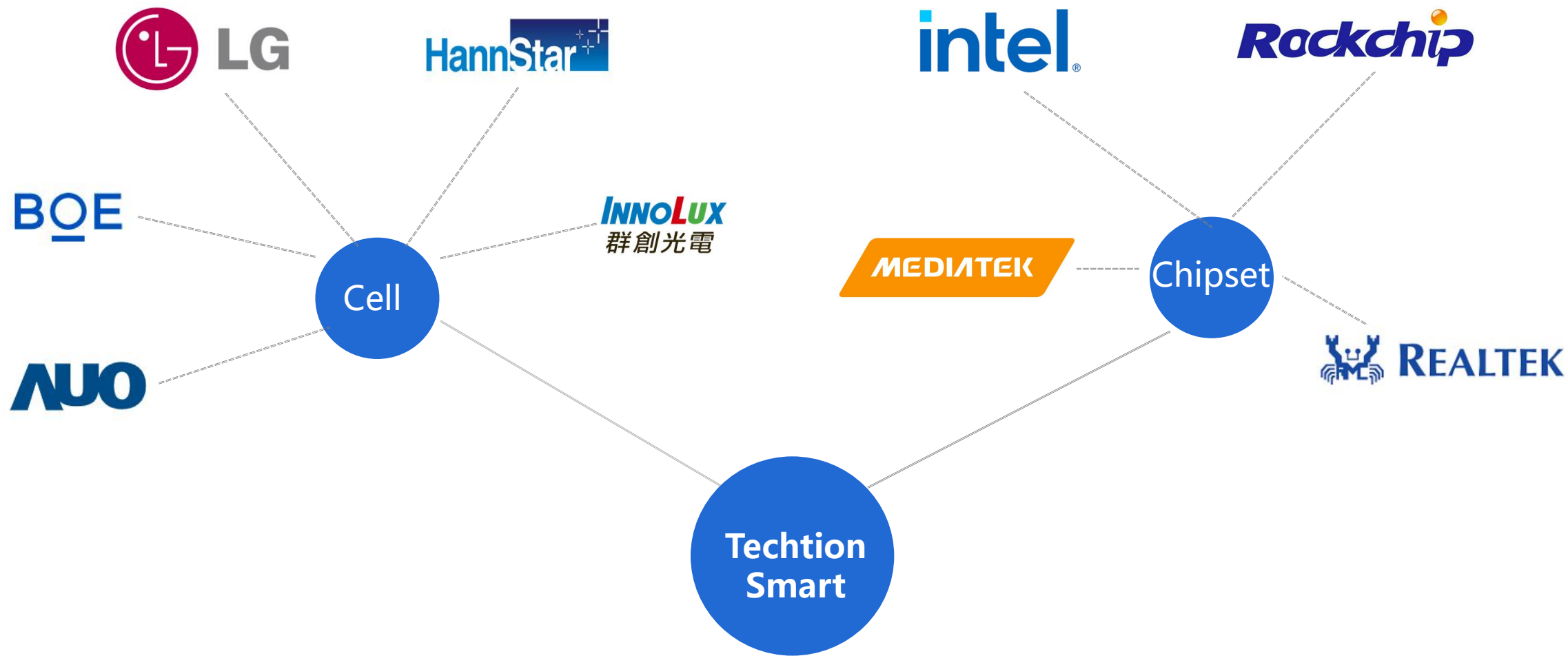


Iris recognition
Andsecure identification



Scan module
Automatic recognition

Upstream Brand Partners



06



TECHTION
SIMIAIRIT

Company Culture

Company Culture



Brand Culture



Vision: Display Green Smart Life

Mission: Your Reliable ECO-Friendly Display Terminal Partner

Core Value: Integrity, Sharing, Shared Responsibility, Win-Win

Philosophy

Business Philosophy:
Leading high-quality development with technology innovation



Management Philosophy:
team cohesion, focus on goals; result-oriented,
efficiency improvement, enthusiastic investment, efficient execution

R&D Philosophy: Gather wisdom, conduct in-depth research
and create bravely

Contact Us

Shenzhen Techtion Smart Electronics Co.,Ltd

Contact: Ms. Echo Hsiao
Tel: +86 755 84827079
Mob: +86 13172496164
Mail: sales@techtionsmart.com

www.techtionsmart.com



Address: Room 902, 8th Floor, Unit 1, Building No. 2, Xintianxia Chengyun Factory District, Vanke City Community, Bantian Street, Longgang District, Shenzhen,China

THANKS FOR WATCHING



| Your Reliable ECO-Friendly Display Terminal Partner