



中国认可
国际互认
检测
TESTING
CNAS L16762

TEST REPORT

Applicant: Shenzhen Techtion Smart Electronics Co., Ltd
Address: Room 902, 8th Floor, Unit 1, Building No. 2, Xintianxia Chengyun
Factory District, Vanke City Community, Bantian Street, Longgang
District, Shenzhen

The following sample(s) and information was/were provided by the client. Dinghua does not assume any responsibility for verifying the accuracy, appropriateness, and/or completeness of the information provided.

Manufacturer: Shenzhen Techtion Smart Electronics Co., Ltd
Address: Room 902, 8th Floor, Unit 1, Building No. 2, Xintianxia Chengyun
Factory District, Vanke City Community, Bantian Street, Longgang
District, Shenzhen

Production plant: Shenzhen Techtion Smart Electronics Co., Ltd
Address: Room 902, 8th Floor, Unit 1, Building No. 2, Xintianxia Chengyun
Factory District, Vanke City Community, Bantian Street, Longgang
District, Shenzhen

Client Contact Number: /

Sample name: Outdoor Reflective Display Terminal

Sample Condition: Intact

Trademark: /

Model /Type: TS-156PHD

Sample Receiving Date: Aug. 09, 2024 & Aug. 26, 2024 & Sep. 20, 2024 & Sep. 26, 2024 &
Sep. 28, 2024 & Oct. 17, 2024

Testing Period: Aug. 09, 2024 ~ Oct. 18, 2024

Test Method(s): Please refer to next page(s).

Test Result(s): Please refer to next page(s).

Test Requirement	Conclusion
EU RoHS Directive(EU) 2015/863 amending Annex II to Directive 2011/65/EU - Lead, Mercury, Cadmium, Hexavalent chromium, Polybrominated biphenyls (PBB), Polybrominated diphenyl ethers (PBDE), Bis (2-ethylhexyl) phthalate (DEHP), Butyl benzyl phthalate (BBP), Dibutyl phthalate (DBP) and Diisobutyl phthalate (DIBP)	Pass
Note: The judgment rule complies with the simple binary judgment rule	

***** FOR FURTHER DETAILS, PLEASE REFER TO THE FOLLOWING PAGE (S) *****

Ding Hua International Certification(Shenzhen) Co., Ltd.

Signature of Authorized Representative



WJ

Authorized signatory

1. Tested components

No.	Sample Description	REMARK
1	Silver metal screw base material	SEE THE PHOTO
2	Black coating	SEE THE PHOTO
3	Metal heat dissipation block base material	SEE THE PHOTO
4	Grey silicone	SEE THE PHOTO
5	Black IC	SEE THE PHOTO
6	Black PCB	SEE THE PHOTO
7	Multi color printed white plastic sticker	SEE THE PHOTO
8	Black printed white sticker	SEE THE PHOTO
9	Silver metal screw	SEE THE PHOTO
10	Silver metal block	SEE THE PHOTO
11	Green PCB	SEE THE PHOTO
12	Black printed white sticker	SEE THE PHOTO
13	Silver metal cover	SEE THE PHOTO
14	crystal oscillator	SEE THE PHOTO
15	Black IC	SEE THE PHOTO
16	Black IC	SEE THE PHOTO
17	Black printed white plastic sticker	SEE THE PHOTO
18	Green PCB	SEE THE PHOTO
19	Silver metal screw	SEE THE PHOTO
20	Black plastic base	SEE THE PHOTO
21	Silver metal pin	SEE THE PHOTO
22	Pink plastic shell	SEE THE PHOTO
23	Silver metal terminal	SEE THE PHOTO
24	Silver metal shell	SEE THE PHOTO
25	Black plastic	SEE THE PHOTO
26	Black printed white plastic sticker	SEE THE PHOTO
27	Yellow LED	SEE THE PHOTO
28	Green LED	SEE THE PHOTO
29	Silver metal pin	SEE THE PHOTO

30	Silver metal shell	SEE THE PHOTO
31	Blue plastic	SEE THE PHOTO
32	Silver metal shell	SEE THE PHOTO
33	Blue plastic	SEE THE PHOTO
34	Silver metal screw	SEE THE PHOTO
35	Silver metal nut	SEE THE PHOTO
36	Off white plastic base	SEE THE PHOTO
37	Silver metal shell	SEE THE PHOTO
38	Black plastic base	SEE THE PHOTO
39	Silver metal shell	SEE THE PHOTO
40	Black plastic shell	SEE THE PHOTO
41	Silver metal pin	SEE THE PHOTO
42	Blue plastic base	SEE THE PHOTO
43	Black printed white adhesive sticker	SEE THE PHOTO
44	Black plastic shell	SEE THE PHOTO
45	Silver metal pin	SEE THE PHOTO
46	Black body	SEE THE PHOTO
47	Silver metal shell	SEE THE PHOTO
48	Black plastic	SEE THE PHOTO
49	Green fiberboard	SEE THE PHOTO
50	IC	SEE THE PHOTO
51	Red printed silver metal shell	SEE THE PHOTO
52	Surface mount capacitor	SEE THE PHOTO
53	White plastic shell	SEE THE PHOTO
54	Green plastic shell	SEE THE PHOTO
55	Golden metal mother pillar	SEE THE PHOTO
56	crystal oscillator	SEE THE PHOTO
57	Black IC	SEE THE PHOTO
58	Black transistor	SEE THE PHOTO
59	The button battery	SEE THE PHOTO
60	Black plastic base	SEE THE PHOTO

61	Silver metal conductive sheet	SEE THE PHOTO
62	Black IC	SEE THE PHOTO
63	Black printed white plastic sticker	SEE THE PHOTO
64	Beige plastic shell	SEE THE PHOTO
65	Silver metal pin	SEE THE PHOTO
66	Silver metal sheet	SEE THE PHOTO
67	Black buzzer	SEE THE PHOTO
68	Grey inductor	SEE THE PHOTO
69	Off white plastic base	SEE THE PHOTO
70	Silver metal shell	SEE THE PHOTO
71	Black plastic	SEE THE PHOTO
72	Black capacitor	SEE THE PHOTO
73	Black printed white plastic sticker	SEE THE PHOTO
74	Black plastic gasket with adhesive	SEE THE PHOTO
75	Green PCB	SEE THE PHOTO
76	Silver metal solder	SEE THE PHOTO
77	Black coating	SEE THE PHOTO
78	Metal cover substrate	SEE THE PHOTO
79	Light purple silicone	SEE THE PHOTO
80	Grey silicone	SEE THE PHOTO
81	Silver metal screw	SEE THE PHOTO
82	Metal screw substrate with black coating	SEE THE PHOTO
83	Silver metal screw	SEE THE PHOTO
84	Silver metal nut	SEE THE PHOTO
85	Golden metal nut	SEE THE PHOTO
86	Golden metal gasket	SEE THE PHOTO
87	Golden metal washer	SEE THE PHOTO
88	Black plastic shell	SEE THE PHOTO
89	Golden metal	SEE THE PHOTO
90	Silver metal solder	SEE THE PHOTO
91	Golden metal shell	SEE THE PHOTO

92	Transparent white plastic sheath	SEE THE PHOTO
93	Golden metal washer	SEE THE PHOTO
94	Golden metal pin	SEE THE PHOTO
95	Golden metal shell	SEE THE PHOTO
96	Red plastic gasket	SEE THE PHOTO
97	Golden metal shell	SEE THE PHOTO
98	Silver metal solder (submitted on Sep. 20, 2024)	SEE THE PHOTO
99	Black plastic heat shrink sleeve	SEE THE PHOTO
100	Black plastic wire leather	SEE THE PHOTO
101	White plastic	SEE THE PHOTO
102	Golden metal terminal	SEE THE PHOTO
103	Silver metal nut	SEE THE PHOTO
104	Silver metal solder (submitted on Sep. 26, 2024)	SEE THE PHOTO
105	Light brown plastic wire skin	SEE THE PHOTO
106	Red plastic wire skin	SEE THE PHOTO
107	Orange plastic wire skin	SEE THE PHOTO
108	Yellow plastic wire skin	SEE THE PHOTO
109	Green plastic wire skin	SEE THE PHOTO
110	Deep blue plastic wire skin	SEE THE PHOTO
111	Purple plastic wire skin	SEE THE PHOTO
112	Grey plastic wire skin	SEE THE PHOTO
113	White plastic wire skin	SEE THE PHOTO
114	Black plastic shell	SEE THE PHOTO
115	Golden metal pin	SEE THE PHOTO
116	Silver metal shell	SEE THE PHOTO
117	Blue plastic	SEE THE PHOTO
118	Black plastic shell	SEE THE PHOTO
119	Black plastic shell (submitted on Oct. 17, 2024)	SEE THE PHOTO
120	Black plastic heat shrink sleeve	SEE THE PHOTO
121	Black plastic sheath	SEE THE PHOTO
122	Red plastic wire skin	SEE THE PHOTO

123	White plastic wire skin	SEE THE PHOTO
124	Black plastic wire skin	SEE THE PHOTO
125	Green plastic wire skin	SEE THE PHOTO
126	Black plastic wire skin	SEE THE PHOTO
127	Red plastic wire skin	SEE THE PHOTO
128	Green plastic wire skin	SEE THE PHOTO
129	White plastic shell	SEE THE PHOTO
130	Black plastic shell	SEE THE PHOTO
131	Black magnetic core	SEE THE PHOTO
132	Black IC	SEE THE PHOTO
133	Yellow printed green plastic outer skin	SEE THE PHOTO
134	Silver metal shell	SEE THE PHOTO
135	Black transistor	SEE THE PHOTO
136	Yellow printed black plastic outer skin	SEE THE PHOTO
137	White dry glue	SEE THE PHOTO
138	White plastic base	SEE THE PHOTO
139	chip resistor	SEE THE PHOTO
140	Black inductor	SEE THE PHOTO
141	Silver metal solder	SEE THE PHOTO
142	Black printed white sticker	SEE THE PHOTO
143	Green PCB	SEE THE PHOTO
144	White plastic shell	SEE THE PHOTO
145	Red plastic wire skin	SEE THE PHOTO
146	Blue plastic wire skin	SEE THE PHOTO
147	Green plastic wire skin	SEE THE PHOTO
148	Black plastic wire skin	SEE THE PHOTO
149	Black plastic heat shrink sleeve	SEE THE PHOTO
150	Silver metal solder	SEE THE PHOTO
151	Silver metal shell (submitted on Oct. 17, 2024)	SEE THE PHOTO
152	Silver metal solder (submitted on Sep. 26, 2024)	SEE THE PHOTO
153	PCB	SEE THE PHOTO

154	White plastic shell	SEE THE PHOTO
155	Translucent white plastic pad	SEE THE PHOTO
156	Silver metal	SEE THE PHOTO
157	Translucent white plastic button	SEE THE PHOTO
158	Black plastic shell	SEE THE PHOTO
159	Black adhesive tape	SEE THE PHOTO
160	White plastic wire skin	SEE THE PHOTO
161	Yellow plastic wire skin	SEE THE PHOTO
162	Black plastic wire skin	SEE THE PHOTO
163	Red plastic wire skin	SEE THE PHOTO
164	Off white plastic base	SEE THE PHOTO
165	Silver metal heat sink block	SEE THE PHOTO
166	Black IC	SEE THE PHOTO
167	Black plastic	SEE THE PHOTO
168	Silver metal pin	SEE THE PHOTO
169	Beige plastic shell	SEE THE PHOTO
170	Black plastic	SEE THE PHOTO
171	Black IC	SEE THE PHOTO
172	crystal oscillator	SEE THE PHOTO
173	Black inductor	SEE THE PHOTO
174	chip resistor	SEE THE PHOTO
175	Surface mount capacitor	SEE THE PHOTO
176	Black IC	SEE THE PHOTO
177	Black printed white sticker	SEE THE PHOTO
178	Silver metal solder	SEE THE PHOTO
179	Green PCB	SEE THE PHOTO
180	White plastic zip tie	SEE THE PHOTO

2. Tested results

Part No	Test Item	Results of EDXRF	Screening Result of PHTH	Result of Wet Chemical Testing (mg/kg)	Conclusion
1	Cd	BL	---	---	PASS
	Pb	BL	---	---	
	Hg	BL	---	---	
	Cr(VI)	BL	---	---	
	PBBs	---	---	---	
	PBDEs	---	---	---	
	DBP	---	---	---	
	BBP	---	---	---	
	DEHP	---	---	---	
DIBP	---	---	---	---	
2	Cd	BL	---	---	PASS
	Pb	BL	---	---	
	Hg	BL	---	---	
	Cr(VI)	BL	---	---	
	PBBs	BL	---	---	
	PBDEs	BL	---	---	
	DBP	---	BL	---	
	BBP	---	BL	---	
	DEHP	---	BL	---	
DIBP	---	BL	---	---	
3	Cd	BL	---	---	PASS
	Pb	BL	---	---	
	Hg	BL	---	---	
	Cr(VI)	BL	---	---	
	PBBs	---	---	---	
	PBDEs	---	---	---	
	DBP	---	---	---	
	BBP	---	---	---	
	DEHP	---	---	---	
DIBP	---	---	---	---	

Part No	Test Item	Results of EDXRF	Screening Result of PHTH	Result of Wet Chemical Testing (mg/kg)	Conclusion
4	Cd	BL	---	---	PASS
	Pb	BL	---	---	
	Hg	BL	---	---	
	Cr(VI)	BL	---	---	
	PBBs	BL	---	---	
	PBDEs	BL	---	---	
	DBP	---	BL	---	
	BBP	---	BL	---	
	DEHP	---	BL	---	
DIBP	---	BL	---		
5	Cd	BL	---	---	PASS
	Pb	BL	---	---	
	Hg	BL	---	---	
	Cr(VI)	BL	---	---	
	PBBs	BL	---	---	
	PBDEs	BL	---	---	
	DBP	---	BL	---	
	BBP	---	BL	---	
	DEHP	---	BL	---	
DIBP	---	BL	---		
6	Cd	BL	---	---	PASS
	Pb	BL	---	---	
	Hg	BL	---	---	
	Cr(VI)	BL	---	---	
	PBBs	IN	---	ND	
	PBDEs	IN	---	ND	
	DBP	---	BL	---	
	BBP	---	BL	---	
	DEHP	---	BL	---	
DIBP	---	BL	---		

Part No	Test Item	Results of EDXRF	Screening Result of PHTH	Result of Wet Chemical Testing (mg/kg)	Conclusion
7	Cd	BL	---	---	PASS
	Pb	BL	---	---	
	Hg	BL	---	---	
	Cr(VI)	BL	---	---	
	PBBs	BL	---	---	
	PBDEs	BL	---	---	
	DBP	---	BL	---	
	BBP	---	BL	---	
	DEHP	---	BL	---	
DIBP	---	BL	---		
8	Cd	BL	---	---	PASS
	Pb	BL	---	---	
	Hg	BL	---	---	
	Cr(VI)	BL	---	---	
	PBBs	BL	---	---	
	PBDEs	BL	---	---	
	DBP	---	BL	---	
	BBP	---	BL	---	
	DEHP	---	BL	---	
DIBP	---	BL	---		
9	Cd	BL	---	---	PASS
	Pb	BL	---	---	
	Hg	BL	---	---	
	Cr(VI)	BL	---	---	
	PBBs	---	---	---	
	PBDEs	---	---	---	
	DBP	---	---	---	
	BBP	---	---	---	
	DEHP	---	---	---	
DIBP	---	---	---		

Part No	Test Item	Results of EDXRF	Screening Result of PHTH	Result of Wet Chemical Testing (mg/kg)	Conclusion
10	Cd	BL	---	---	PASS
	Pb	BL	---	---	
	Hg	BL	---	---	
	Cr(VI)	BL	---	---	
	PBBs	---	---	---	
	PBDEs	---	---	---	
	DBP	---	---	---	
	BBP	---	---	---	
	DEHP	---	---	---	
DIBP	---	---	---		
11	Cd	BL	---	---	PASS
	Pb	BL	---	---	
	Hg	BL	---	---	
	Cr(VI)	BL	---	---	
	PBBs	IN	---	ND	
	PBDEs	IN	---	ND	
	DBP	---	BL	---	
	BBP	---	BL	---	
	DEHP	---	BL	---	
DIBP	---	BL	---		
12	Cd	BL	---	---	PASS
	Pb	BL	---	---	
	Hg	BL	---	---	
	Cr(VI)	BL	---	---	
	PBBs	BL	---	---	
	PBDEs	BL	---	---	
	DBP	---	BL	---	
	BBP	---	BL	---	
	DEHP	---	BL	---	
DIBP	---	BL	---		

Part No	Test Item	Results of EDXRF	Screening Result of PHTH	Result of Wet Chemical Testing (mg/kg)	Conclusion
13	Cd	BL	---	---	PASS
	Pb	BL	---	---	
	Hg	BL	---	---	
	Cr(VI)	BL	---	---	
	PBBs	---	---	---	
	PBDEs	---	---	---	
	DBP	---	---	---	
	BBP	---	---	---	
	DEHP	---	---	---	
DIBP	---	---	---		
14	Cd	BL	---	---	PASS
	Pb	BL	---	---	
	Hg	BL	---	---	
	Cr(VI)	BL	---	---	
	PBBs	BL	---	---	
	PBDEs	BL	---	---	
	DBP	---	BL	---	
	BBP	---	BL	---	
	DEHP	---	BL	---	
DIBP	---	BL	---		
15	Cd	BL	---	---	PASS
	Pb	BL	---	---	
	Hg	BL	---	---	
	Cr(VI)	BL	---	---	
	PBBs	BL	---	---	
	PBDEs	BL	---	---	
	DBP	---	BL	---	
	BBP	---	BL	---	
	DEHP	---	BL	---	
DIBP	---	BL	---		

Part No	Test Item	Results of EDXRF	Screening Result of PHTH	Result of Wet Chemical Testing (mg/kg)	Conclusion
16	Cd	BL	---	---	PASS
	Pb	BL	---	---	
	Hg	BL	---	---	
	Cr(VI)	BL	---	---	
	PBBs	BL	---	---	
	PBDEs	BL	---	---	
	DBP	---	BL	---	
	BBP	---	BL	---	
	DEHP	---	BL	---	
DIBP	---	BL	---		
17	Cd	BL	---	---	PASS
	Pb	BL	---	---	
	Hg	BL	---	---	
	Cr(VI)	BL	---	---	
	PBBs	BL	---	---	
	PBDEs	BL	---	---	
	DBP	---	BL	---	
	BBP	---	BL	---	
	DEHP	---	BL	---	
DIBP	---	BL	---		
18	Cd	BL	---	---	PASS
	Pb	BL	---	---	
	Hg	BL	---	---	
	Cr(VI)	BL	---	---	
	PBBs	IN	---	ND	
	PBDEs	IN	---	ND	
	DBP	---	BL	---	
	BBP	---	BL	---	
	DEHP	---	BL	---	
DIBP	---	BL	---		

Part No	Test Item	Results of EDXRF	Screening Result of PHTH	Result of Wet Chemical Testing (mg/kg)	Conclusion
19	Cd	BL	---	---	PASS
	Pb	BL	---	---	
	Hg	BL	---	---	
	Cr(VI)	BL	---	---	
	PBBs	---	---	---	
	PBDEs	---	---	---	
	DBP	---	---	---	
	BBP	---	---	---	
	DEHP	---	---	---	
DIBP	---	---	---		
20	Cd	BL	---	---	PASS
	Pb	BL	---	---	
	Hg	BL	---	---	
	Cr(VI)	BL	---	---	
	PBBs	IN	---	ND	
	PBDEs	IN	---	ND	
	DBP	---	BL	---	
	BBP	---	BL	---	
	DEHP	---	BL	---	
DIBP	---	BL	---		
21	Cd	BL	---	---	PASS
	Pb	BL	---	---	
	Hg	BL	---	---	
	Cr(VI)	BL	---	---	
	PBBs	---	---	---	
	PBDEs	---	---	---	
	DBP	---	---	---	
	BBP	---	---	---	
	DEHP	---	---	---	
DIBP	---	---	---		

Part No	Test Item	Results of EDXRF	Screening Result of PHTH	Result of Wet Chemical Testing (mg/kg)	Conclusion
22	Cd	BL	---	---	PASS
	Pb	BL	---	---	
	Hg	BL	---	---	
	Cr(VI)	BL	---	---	
	PBBs	IN	---	ND	
	PBDEs	IN	---	ND	
	DBP	---	BL	---	
	BBP	---	BL	---	
	DEHP	---	BL	---	
DIBP	---	BL	---		
23	Cd	BL	---	---	PASS
	Pb	BL	---	---	
	Hg	BL	---	---	
	Cr(VI)	BL	---	---	
	PBBs	---	---	---	
	PBDEs	---	---	---	
	DBP	---	---	---	
	BBP	---	---	---	
	DEHP	---	---	---	
DIBP	---	---	---		
24	Cd	BL	---	---	PASS
	Pb	BL	---	---	
	Hg	BL	---	---	
	Cr(VI)	IN	---	Negative	
	PBBs	---	---	---	
	PBDEs	---	---	---	
	DBP	---	---	---	
	BBP	---	---	---	
	DEHP	---	---	---	
DIBP	---	---	---		

Part No	Test Item	Results of EDXRF	Screening Result of PHTH	Result of Wet Chemical Testing (mg/kg)	Conclusion
25	Cd	BL	---	---	PASS
	Pb	BL	---	---	
	Hg	BL	---	---	
	Cr(VI)	BL	---	---	
	PBBs	IN	---	ND	
	PBDEs	IN	---	ND	
	DBP	---	BL	---	
	BBP	---	BL	---	
	DEHP	---	BL	---	
DIBP	---	BL	---		
26	Cd	BL	---	---	PASS
	Pb	BL	---	---	
	Hg	BL	---	---	
	Cr(VI)	BL	---	---	
	PBBs	BL	---	---	
	PBDEs	BL	---	---	
	DBP	---	BL	---	
	BBP	---	BL	---	
	DEHP	---	BL	---	
DIBP	---	BL	---		
27	Cd	BL	---	---	PASS
	Pb	BL	---	---	
	Hg	BL	---	---	
	Cr(VI)	BL	---	---	
	PBBs	IN	---	ND	
	PBDEs	IN	---	ND	
	DBP	---	BL	---	
	BBP	---	BL	---	
	DEHP	---	BL	---	
DIBP	---	BL	---		

Part No	Test Item	Results of EDXRF	Screening Result of PHTH	Result of Wet Chemical Testing (mg/kg)	Conclusion
28	Cd	BL	---	---	PASS
	Pb	BL	---	---	
	Hg	BL	---	---	
	Cr(VI)	BL	---	---	
	PBBs	IN	---	ND	
	PBDEs	IN	---	ND	
	DBP	---	BL	---	
	BBP	---	BL	---	
	DEHP	---	BL	---	
DIBP	---	BL	---		
29	Cd	BL	---	---	PASS
	Pb	BL	---	---	
	Hg	BL	---	---	
	Cr(VI)	BL	---	---	
	PBBs	---	---	---	
	PBDEs	---	---	---	
	DBP	---	---	---	
	BBP	---	---	---	
	DEHP	---	---	---	
DIBP	---	---	---		
30	Cd	BL	---	---	PASS
	Pb	BL	---	---	
	Hg	BL	---	---	
	Cr(VI)	BL	---	---	
	PBBs	---	---	---	
	PBDEs	---	---	---	
	DBP	---	---	---	
	BBP	---	---	---	
	DEHP	---	---	---	
DIBP	---	---	---		

Part No	Test Item	Results of EDXRF	Screening Result of PHTH	Result of Wet Chemical Testing (mg/kg)	Conclusion
31	Cd	BL	---	---	PASS
	Pb	BL	---	---	
	Hg	BL	---	---	
	Cr(VI)	BL	---	---	
	PBBs	IN	---	ND	
	PBDEs	IN	---	ND	
	DBP	---	BL	---	
	BBP	---	BL	---	
	DEHP	---	BL	---	
DIBP	---	BL	---		
32	Cd	BL	---	---	PASS
	Pb	BL	---	---	
	Hg	BL	---	---	
	Cr(VI)	BL	---	---	
	PBBs	---	---	---	
	PBDEs	---	---	---	
	DBP	---	---	---	
	BBP	---	---	---	
	DEHP	---	---	---	
DIBP	---	---	---		
33	Cd	BL	---	---	PASS
	Pb	BL	---	---	
	Hg	BL	---	---	
	Cr(VI)	BL	---	---	
	PBBs	IN	---	ND	
	PBDEs	IN	---	ND	
	DBP	---	BL	---	
	BBP	---	BL	---	
	DEHP	---	BL	---	
DIBP	---	BL	---		

Part No	Test Item	Results of EDXRF	Screening Result of PHTH	Result of Wet Chemical Testing (mg/kg)	Conclusion
34	Cd	BL	---	---	PASS
	Pb	BL	---	---	
	Hg	BL	---	---	
	Cr(VI)	BL	---	---	
	PBBs	---	---	---	
	PBDEs	---	---	---	
	DBP	---	---	---	
	BBP	---	---	---	
	DEHP	---	---	---	
DIBP	---	---	---		
35	Cd	BL	---	---	PASS
	Pb	OL	---	26529##	
	Hg	BL	---	---	
	Cr(VI)	BL	---	---	
	PBBs	---	---	---	
	PBDEs	---	---	---	
	DBP	---	---	---	
	BBP	---	---	---	
	DEHP	---	---	---	
DIBP	---	---	---		
36	Cd	BL	---	---	PASS
	Pb	BL	---	---	
	Hg	BL	---	---	
	Cr(VI)	BL	---	---	
	PBBs	BL	---	---	
	PBDEs	BL	---	---	
	DBP	---	BL	---	
	BBP	---	BL	---	
	DEHP	---	BL	---	
DIBP	---	BL	---		

Part No	Test Item	Results of EDXRF	Screening Result of PHTH	Result of Wet Chemical Testing (mg/kg)	Conclusion
37	Cd	BL	---	---	PASS
	Pb	BL	---	---	
	Hg	BL	---	---	
	Cr(VI)	BL	---	---	
	PBBs	---	---	---	
	PBDEs	---	---	---	
	DBP	---	---	---	
	BBP	---	---	---	
	DEHP	---	---	---	
DIBP	---	---	---		
38	Cd	BL	---	---	PASS
	Pb	BL	---	---	
	Hg	BL	---	---	
	Cr(VI)	BL	---	---	
	PBBs	BL	---	---	
	PBDEs	BL	---	---	
	DBP	---	BL	---	
	BBP	---	BL	---	
	DEHP	---	BL	---	
DIBP	---	BL	---		
39	Cd	BL	---	---	PASS
	Pb	BL	---	---	
	Hg	BL	---	---	
	Cr(VI)	BL	---	---	
	PBBs	---	---	---	
	PBDEs	---	---	---	
	DBP	---	---	---	
	BBP	---	---	---	
	DEHP	---	---	---	
DIBP	---	---	---		

Part No	Test Item	Results of EDXRF	Screening Result of PHTH	Result of Wet Chemical Testing (mg/kg)	Conclusion
40	Cd	BL	---	---	PASS
	Pb	BL	---	---	
	Hg	BL	---	---	
	Cr(VI)	BL	---	---	
	PBBs	IN	---	ND	
	PBDEs	IN	---	ND	
	DBP	---	BL	---	
	BBP	---	BL	---	
	DEHP	---	BL	---	
DIBP	---	BL	---		
41	Cd	BL	---	---	PASS
	Pb	BL	---	---	
	Hg	BL	---	---	
	Cr(VI)	BL	---	---	
	PBBs	---	---	---	
	PBDEs	---	---	---	
	DBP	---	---	---	
	BBP	---	---	---	
	DEHP	---	---	---	
DIBP	---	---	---		
42	Cd	BL	---	---	PASS
	Pb	BL	---	---	
	Hg	BL	---	---	
	Cr(VI)	BL	---	---	
	PBBs	BL	---	---	
	PBDEs	BL	---	---	
	DBP	---	BL	---	
	BBP	---	BL	---	
	DEHP	---	BL	---	
DIBP	---	BL	---		

Part No	Test Item	Results of EDXRF	Screening Result of PHTH	Result of Wet Chemical Testing (mg/kg)	Conclusion
43	Cd	BL	---	---	PASS
	Pb	BL	---	---	
	Hg	BL	---	---	
	Cr(VI)	BL	---	---	
	PBBs	BL	---	---	
	PBDEs	BL	---	---	
	DBP	---	BL	---	
	BBP	---	BL	---	
	DEHP	---	BL	---	
DIBP	---	BL	---		
44	Cd	BL	---	---	PASS
	Pb	BL	---	---	
	Hg	BL	---	---	
	Cr(VI)	BL	---	---	
	PBBs	BL	---	---	
	PBDEs	BL	---	---	
	DBP	---	BL	---	
	BBP	---	BL	---	
	DEHP	---	BL	---	
DIBP	---	BL	---		
45	Cd	BL	---	---	PASS
	Pb	BL	---	---	
	Hg	BL	---	---	
	Cr(VI)	BL	---	---	
	PBBs	---	---	---	
	PBDEs	---	---	---	
	DBP	---	---	---	
	BBP	---	---	---	
	DEHP	---	---	---	
DIBP	---	---	---		

Part No	Test Item	Results of EDXRF	Screening Result of PHTH	Result of Wet Chemical Testing (mg/kg)	Conclusion
46	Cd	BL	---	---	PASS
	Pb	BL	---	---	
	Hg	BL	---	---	
	Cr(VI)	BL	---	---	
	PBBs	BL	---	---	
	PBDEs	BL	---	---	
	DBP	---	BL	---	
	BBP	---	BL	---	
	DEHP	---	BL	---	
DIBP	---	BL	---		
47	Cd	BL	---	---	PASS
	Pb	BL	---	---	
	Hg	BL	---	---	
	Cr(VI)	BL	---	---	
	PBBs	---	---	---	
	PBDEs	---	---	---	
	DBP	---	---	---	
	BBP	---	---	---	
	DEHP	---	---	---	
DIBP	---	---	---		
48	Cd	BL	---	---	PASS
	Pb	BL	---	---	
	Hg	BL	---	---	
	Cr(VI)	BL	---	---	
	PBBs	IN	---	ND	
	PBDEs	IN	---	ND	
	DBP	---	BL	---	
	BBP	---	BL	---	
	DEHP	---	BL	---	
DIBP	---	BL	---		

Part No	Test Item	Results of EDXRF	Screening Result of PHTH	Result of Wet Chemical Testing (mg/kg)	Conclusion
49	Cd	BL	---	---	PASS
	Pb	BL	---	---	
	Hg	BL	---	---	
	Cr(VI)	BL	---	---	
	PBBs	BL	---	---	
	PBDEs	BL	---	---	
	DBP	---	BL	---	
	BBP	---	BL	---	
	DEHP	---	BL	---	
DIBP	---	BL	---		
50	Cd	BL	---	---	PASS
	Pb	BL	---	---	
	Hg	BL	---	---	
	Cr(VI)	BL	---	---	
	PBBs	BL	---	---	
	PBDEs	BL	---	---	
	DBP	---	BL	---	
	BBP	---	BL	---	
	DEHP	---	BL	---	
DIBP	---	BL	---		
51	Cd	BL	---	---	PASS
	Pb	BL	---	---	
	Hg	BL	---	---	
	Cr(VI)	BL	---	---	
	PBBs	---	---	---	
	PBDEs	---	---	---	
	DBP	---	---	---	
	BBP	---	---	---	
	DEHP	---	---	---	
DIBP	---	---	---		

Part No	Test Item	Results of EDXRF	Screening Result of PHTH	Result of Wet Chemical Testing (mg/kg)	Conclusion
52	Cd	BL	---	---	PASS
	Pb	BL	---	---	
	Hg	BL	---	---	
	Cr(VI)	BL	---	---	
	PBBs	BL	---	---	
	PBDEs	BL	---	---	
	DBP	---	BL	---	
	BBP	---	BL	---	
	DEHP	---	BL	---	
DIBP	---	BL	---		
53	Cd	BL	---	---	PASS
	Pb	BL	---	---	
	Hg	BL	---	---	
	Cr(VI)	BL	---	---	
	PBBs	BL	---	---	
	PBDEs	BL	---	---	
	DBP	---	BL	---	
	BBP	---	BL	---	
	DEHP	---	BL	---	
DIBP	---	BL	---		
54	Cd	BL	---	---	PASS
	Pb	BL	---	---	
	Hg	BL	---	---	
	Cr(VI)	BL	---	---	
	PBBs	IN	---	ND	
	PBDEs	IN	---	ND	
	DBP	---	BL	---	
	BBP	---	BL	---	
	DEHP	---	BL	---	
DIBP	---	BL	---		

Part No	Test Item	Results of EDXRF	Screening Result of PHTH	Result of Wet Chemical Testing (mg/kg)	Conclusion
55	Cd	BL	---	---	PASS
	Pb	OL	---	30606##	
	Hg	BL	---	---	
	Cr(VI)	BL	---	---	
	PBBs	---	---	---	
	PBDEs	---	---	---	
	DBP	---	---	---	
	BBP	---	---	---	
	DEHP	---	---	---	
DIBP	---	---	---		
56	Cd	BL	---	---	PASS
	Pb	BL	---	---	
	Hg	BL	---	---	
	Cr(VI)	BL	---	---	
	PBBs	BL	---	---	
	PBDEs	BL	---	---	
	DBP	---	BL	---	
	BBP	---	BL	---	
	DEHP	---	BL	---	
DIBP	---	BL	---		
57	Cd	BL	---	---	PASS
	Pb	BL	---	---	
	Hg	BL	---	---	
	Cr(VI)	BL	---	---	
	PBBs	BL	---	---	
	PBDEs	BL	---	---	
	DBP	---	BL	---	
	BBP	---	BL	---	
	DEHP	---	BL	---	
DIBP	---	BL	---		

Part No	Test Item	Results of EDXRF	Screening Result of PHTH	Result of Wet Chemical Testing (mg/kg)	Conclusion
58	Cd	BL	---	---	PASS
	Pb	BL	---	---	
	Hg	BL	---	---	
	Cr(VI)	BL	---	---	
	PBBs	BL	---	---	
	PBDEs	BL	---	---	
	DBP	---	BL	---	
	BBP	---	BL	---	
	DEHP	---	BL	---	
DIBP	---	BL	---		
59	Cd	BL	---	---	PASS
	Pb	BL	---	---	
	Hg	BL	---	---	
	Cr(VI)	IN	---	Negative	
	PBBs	---	---	---	
	PBDEs	---	---	---	
	DBP	---	---	---	
	BBP	---	---	---	
	DEHP	---	---	---	
DIBP	---	---	---		
60	Cd	BL	---	---	PASS
	Pb	BL	---	---	
	Hg	BL	---	---	
	Cr(VI)	BL	---	---	
	PBBs	BL	---	---	
	PBDEs	BL	---	---	
	DBP	---	BL	---	
	BBP	---	BL	---	
	DEHP	---	BL	---	
DIBP	---	BL	---		

Part No	Test Item	Results of EDXRF	Screening Result of PHTH	Result of Wet Chemical Testing (mg/kg)	Conclusion
61	Cd	BL	---	---	PASS
	Pb	BL	---	---	
	Hg	BL	---	---	
	Cr(VI)	BL	---	---	
	PBBs	---	---	---	
	PBDEs	---	---	---	
	DBP	---	---	---	
	BBP	---	---	---	
	DEHP	---	---	---	
DIBP	---	---	---		
62	Cd	BL	---	---	PASS
	Pb	BL	---	---	
	Hg	BL	---	---	
	Cr(VI)	BL	---	---	
	PBBs	BL	---	---	
	PBDEs	BL	---	---	
	DBP	---	BL	---	
	BBP	---	BL	---	
	DEHP	---	BL	---	
DIBP	---	BL	---		
63	Cd	BL	---	---	PASS
	Pb	BL	---	---	
	Hg	BL	---	---	
	Cr(VI)	BL	---	---	
	PBBs	BL	---	---	
	PBDEs	BL	---	---	
	DBP	---	BL	---	
	BBP	---	BL	---	
	DEHP	---	BL	---	
DIBP	---	BL	---		

Part No	Test Item	Results of EDXRF	Screening Result of PHTH	Result of Wet Chemical Testing (mg/kg)	Conclusion
64	Cd	BL	---	---	PASS
	Pb	BL	---	---	
	Hg	BL	---	---	
	Cr(VI)	BL	---	---	
	PBBs	BL	---	---	
	PBDEs	BL	---	---	
	DBP	---	BL	---	
	BBP	---	BL	---	
	DEHP	---	BL	---	
DIBP	---	BL	---		
65	Cd	BL	---	---	PASS
	Pb	BL	---	---	
	Hg	BL	---	---	
	Cr(VI)	BL	---	---	
	PBBs	---	---	---	
	PBDEs	---	---	---	
	DBP	---	---	---	
	BBP	---	---	---	
	DEHP	---	---	---	
DIBP	---	---	---		
66	Cd	BL	---	---	PASS
	Pb	BL	---	---	
	Hg	BL	---	---	
	Cr(VI)	BL	---	---	
	PBBs	---	---	---	
	PBDEs	---	---	---	
	DBP	---	---	---	
	BBP	---	---	---	
	DEHP	---	---	---	
DIBP	---	---	---		

Part No	Test Item	Results of EDXRF	Screening Result of PHTH	Result of Wet Chemical Testing (mg/kg)	Conclusion
67	Cd	BL	---	---	PASS
	Pb	BL	---	---	
	Hg	BL	---	---	
	Cr(VI)	BL	---	---	
	PBBs	IN	---	ND	
	PBDEs	IN	---	ND	
	DBP	---	BL	---	
	BBP	---	BL	---	
	DEHP	---	BL	---	
DIBP	---	BL	---		
68	Cd	BL	---	---	PASS
	Pb	BL	---	---	
	Hg	BL	---	---	
	Cr(VI)	BL	---	---	
	PBBs	BL	---	---	
	PBDEs	BL	---	---	
	DBP	---	BL	---	
	BBP	---	BL	---	
	DEHP	---	BL	---	
DIBP	---	BL	---		
69	Cd	BL	---	---	PASS
	Pb	BL	---	---	
	Hg	BL	---	---	
	Cr(VI)	BL	---	---	
	PBBs	IN	---	ND	
	PBDEs	IN	---	ND	
	DBP	---	BL	---	
	BBP	---	BL	---	
	DEHP	---	BL	---	
DIBP	---	BL	---		

Part No	Test Item	Results of EDXRF	Screening Result of PHTH	Result of Wet Chemical Testing (mg/kg)	Conclusion
70	Cd	BL	---	---	PASS
	Pb	BL	---	---	
	Hg	BL	---	---	
	Cr(VI)	IN	---	Negative	
	PBBs	---	---	---	
	PBDEs	---	---	---	
	DBP	---	---	---	
	BBP	---	---	---	
	DEHP	---	---	---	
DIBP	---	---	---		
71	Cd	BL	---	---	PASS
	Pb	BL	---	---	
	Hg	BL	---	---	
	Cr(VI)	BL	---	---	
	PBBs	BL	---	---	
	PBDEs	BL	---	---	
	DBP	---	BL	---	
	BBP	---	BL	---	
	DEHP	---	BL	---	
DIBP	---	BL	---		
72	Cd	BL	---	---	PASS
	Pb	BL	---	---	
	Hg	BL	---	---	
	Cr(VI)	BL	---	---	
	PBBs	BL	---	---	
	PBDEs	BL	---	---	
	DBP	---	BL	---	
	BBP	---	BL	---	
	DEHP	---	BL	---	
DIBP	---	BL	---		

Part No	Test Item	Results of EDXRF	Screening Result of PHTH	Result of Wet Chemical Testing (mg/kg)	Conclusion
73	Cd	BL	---	---	PASS
	Pb	BL	---	---	
	Hg	BL	---	---	
	Cr(VI)	BL	---	---	
	PBBs	BL	---	---	
	PBDEs	BL	---	---	
	DBP	---	BL	---	
	BBP	---	BL	---	
	DEHP	---	BL	---	
DIBP	---	BL	---		
74	Cd	BL	---	---	PASS
	Pb	BL	---	---	
	Hg	BL	---	---	
	Cr(VI)	BL	---	---	
	PBBs	BL	---	---	
	PBDEs	BL	---	---	
	DBP	---	BL	---	
	BBP	---	BL	---	
	DEHP	---	BL	---	
DIBP	---	BL	---		
75	Cd	BL	---	---	PASS
	Pb	BL	---	---	
	Hg	BL	---	---	
	Cr(VI)	BL	---	---	
	PBBs	IN	---	ND	
	PBDEs	IN	---	ND	
	DBP	---	BL	---	
	BBP	---	BL	---	
	DEHP	---	BL	---	
DIBP	---	BL	---		

Part No	Test Item	Results of EDXRF	Screening Result of PHTH	Result of Wet Chemical Testing (mg/kg)	Conclusion
76	Cd	BL	---	---	PASS
	Pb	BL	---	---	
	Hg	BL	---	---	
	Cr(VI)	BL	---	---	
	PBBs	---	---	---	
	PBDEs	---	---	---	
	DBP	---	---	---	
	BBP	---	---	---	
	DEHP	---	---	---	
DIBP	---	---	---		
77	Cd	BL	---	---	PASS
	Pb	BL	---	---	
	Hg	BL	---	---	
	Cr(VI)	BL	---	---	
	PBBs	BL	---	---	
	PBDEs	BL	---	---	
	DBP	---	BL	---	
	BBP	---	BL	---	
	DEHP	---	BL	---	
DIBP	---	BL	---		
78	Cd	BL	---	---	PASS
	Pb	BL	---	---	
	Hg	BL	---	---	
	Cr(VI)	BL	---	---	
	PBBs	---	---	---	
	PBDEs	---	---	---	
	DBP	---	---	---	
	BBP	---	---	---	
	DEHP	---	---	---	
DIBP	---	---	---		

Part No	Test Item	Results of EDXRF	Screening Result of PHTH	Result of Wet Chemical Testing (mg/kg)	Conclusion
79	Cd	BL	---	---	PASS
	Pb	BL	---	---	
	Hg	BL	---	---	
	Cr(VI)	BL	---	---	
	PBBs	BL	---	---	
	PBDEs	BL	---	---	
	DBP	---	BL	---	
	BBP	---	BL	---	
	DEHP	---	BL	---	
DIBP	---	BL	---		
80	Cd	BL	---	---	PASS
	Pb	BL	---	---	
	Hg	BL	---	---	
	Cr(VI)	BL	---	---	
	PBBs	BL	---	---	
	PBDEs	BL	---	---	
	DBP	---	BL	---	
	BBP	---	BL	---	
	DEHP	---	BL	---	
DIBP	---	BL	---		
81	Cd	BL	---	---	PASS
	Pb	BL	---	---	
	Hg	BL	---	---	
	Cr(VI)	BL	---	---	
	PBBs	---	---	---	
	PBDEs	---	---	---	
	DBP	---	---	---	
	BBP	---	---	---	
	DEHP	---	---	---	
DIBP	---	---	---		

Part No	Test Item	Results of EDXRF	Screening Result of PHTH	Result of Wet Chemical Testing (mg/kg)	Conclusion
82	Cd	BL	---	---	PASS
	Pb	BL	---	---	
	Hg	BL	---	---	
	Cr(VI)	BL	---	---	
	PBBs	---	---	---	
	PBDEs	---	---	---	
	DBP	---	---	---	
	BBP	---	---	---	
	DEHP	---	---	---	
DIBP	---	---	---		
83	Cd	BL	---	---	PASS
	Pb	BL	---	---	
	Hg	BL	---	---	
	Cr(VI)	BL	---	---	
	PBBs	---	---	---	
	PBDEs	---	---	---	
	DBP	---	---	---	
	BBP	---	---	---	
	DEHP	---	---	---	
DIBP	---	---	---		
84	Cd	OL	---	61	PASS
	Pb	OL	---	38569##	
	Hg	BL	---	---	
	Cr(VI)	BL	---	---	
	PBBs	---	---	---	
	PBDEs	---	---	---	
	DBP	---	---	---	
	BBP	---	---	---	
	DEHP	---	---	---	
DIBP	---	---	---		

Part No	Test Item	Results of EDXRF	Screening Result of PHTH	Result of Wet Chemical Testing (mg/kg)	Conclusion
85	Cd	BL	---	---	PASS
	Pb	OL	---	15556 ^{##}	
	Hg	BL	---	---	
	Cr(VI)	BL	---	---	
	PBBs	---	---	---	
	PBDEs	---	---	---	
	DBP	---	---	---	
	BBP	---	---	---	
	DEHP	---	---	---	
DIBP	---	---	---		
86	Cd	BL	---	---	PASS
	Pb	BL	---	---	
	Hg	BL	---	---	
	Cr(VI)	BL	---	---	
	PBBs	---	---	---	
	PBDEs	---	---	---	
	DBP	---	---	---	
	BBP	---	---	---	
	DEHP	---	---	---	
DIBP	---	---	---		
87	Cd	BL	---	---	PASS
	Pb	BL	---	---	
	Hg	BL	---	---	
	Cr(VI)	BL	---	---	
	PBBs	---	---	---	
	PBDEs	---	---	---	
	DBP	---	---	---	
	BBP	---	---	---	
	DEHP	---	---	---	
DIBP	---	---	---		

Part No	Test Item	Results of EDXRF	Screening Result of PHTH	Result of Wet Chemical Testing (mg/kg)	Conclusion
88	Cd	BL	---	---	PASS
	Pb	BL	---	---	
	Hg	BL	---	---	
	Cr(VI)	BL	---	---	
	PBBs	BL	---	---	
	PBDEs	BL	---	---	
	DBP	---	BL	---	
	BBP	---	BL	---	
	DEHP	---	BL	---	
DIBP	---	BL	---		
89	Cd	BL	---	---	PASS
	Pb	OL	---	27181##	
	Hg	BL	---	---	
	Cr(VI)	BL	---	---	
	PBBs	---	---	---	
	PBDEs	---	---	---	
	DBP	---	---	---	
	BBP	---	---	---	
	DEHP	---	---	---	
DIBP	---	---	---		
90	Cd	BL	---	---	PASS
	Pb	BL	---	---	
	Hg	BL	---	---	
	Cr(VI)	BL	---	---	
	PBBs	---	---	---	
	PBDEs	---	---	---	
	DBP	---	---	---	
	BBP	---	---	---	
	DEHP	---	---	---	
DIBP	---	---	---		

Part No	Test Item	Results of EDXRF	Screening Result of PHTH	Result of Wet Chemical Testing (mg/kg)	Conclusion
91	Cd	BL	---	---	PASS
	Pb	OL	---	18497##	
	Hg	BL	---	---	
	Cr(VI)	BL	---	---	
	PBBs	---	---	---	
	PBDEs	---	---	---	
	DBP	---	---	---	
	BBP	---	---	---	
	DEHP	---	---	---	
DIBP	---	---	---	---	
92	Cd	BL	---	---	PASS
	Pb	BL	---	---	
	Hg	BL	---	---	
	Cr(VI)	BL	---	---	
	PBBs	BL	---	---	
	PBDEs	BL	---	---	
	DBP	---	BL	---	
	BBP	---	BL	---	
	DEHP	---	BL	---	
DIBP	---	BL	---	---	
93	Cd	BL	---	---	PASS
	Pb	BL	---	---	
	Hg	BL	---	---	
	Cr(VI)	BL	---	---	
	PBBs	---	---	---	
	PBDEs	---	---	---	
	DBP	---	---	---	
	BBP	---	---	---	
	DEHP	---	---	---	
DIBP	---	---	---	---	

Part No	Test Item	Results of EDXRF	Screening Result of PHTH	Result of Wet Chemical Testing (mg/kg)	Conclusion
94	Cd	BL	---	---	PASS
	Pb	OL	---	23679##	
	Hg	BL	---	---	
	Cr(VI)	BL	---	---	
	PBBs	---	---	---	
	PBDEs	---	---	---	
	DBP	---	---	---	
	BBP	---	---	---	
	DEHP	---	---	---	
DIBP	---	---	---		
95	Cd	BL	---	---	PASS
	Pb	OL	---	28087##	
	Hg	BL	---	---	
	Cr(VI)	BL	---	---	
	PBBs	---	---	---	
	PBDEs	---	---	---	
	DBP	---	---	---	
	BBP	---	---	---	
	DEHP	---	---	---	
DIBP	---	---	---		
96	Cd	BL	---	---	PASS
	Pb	BL	---	---	
	Hg	BL	---	---	
	Cr(VI)	BL	---	---	
	PBBs	BL	---	---	
	PBDEs	BL	---	---	
	DBP	---	BL	---	
	BBP	---	BL	---	
	DEHP	---	BL	---	
DIBP	---	BL	---		

Part No	Test Item	Results of EDXRF	Screening Result of PHTH	Result of Wet Chemical Testing (mg/kg)	Conclusion
97	Cd	BL	---	---	PASS
	Pb	OL	---	24318##	
	Hg	BL	---	---	
	Cr(VI)	BL	---	---	
	PBBs	---	---	---	
	PBDEs	---	---	---	
	DBP	---	---	---	
	BBP	---	---	---	
	DEHP	---	---	---	
DIBP	---	---	---		
98	Cd	BL	---	---	PASS
	Pb	BL	---	---	
	Hg	BL	---	---	
	Cr(VI)	BL	---	---	
	PBBs	---	---	---	
	PBDEs	---	---	---	
	DBP	---	---	---	
	BBP	---	---	---	
	DEHP	---	---	---	
DIBP	---	---	---		
99	Cd	BL	---	---	PASS
	Pb	BL	---	---	
	Hg	BL	---	---	
	Cr(VI)	BL	---	---	
	PBBs	BL	---	---	
	PBDEs	BL	---	---	
	DBP	---	BL	---	
	BBP	---	BL	---	
	DEHP	---	BL	---	
DIBP	---	BL	---		

Part No	Test Item	Results of EDXRF	Screening Result of PHTH	Result of Wet Chemical Testing (mg/kg)	Conclusion
100	Cd	BL	---	---	PASS
	Pb	BL	---	---	
	Hg	BL	---	---	
	Cr(VI)	BL	---	---	
	PBBs	BL	---	---	
	PBDEs	BL	---	---	
	DBP	---	BL	---	
	BBP	---	BL	---	
	DEHP	---	BL	---	
DIBP	---	BL	---		
101	Cd	BL	---	---	PASS
	Pb	BL	---	---	
	Hg	BL	---	---	
	Cr(VI)	BL	---	---	
	PBBs	BL	---	---	
	PBDEs	BL	---	---	
	DBP	---	BL	---	
	BBP	---	BL	---	
	DEHP	---	BL	---	
DIBP	---	BL	---		
102	Cd	BL	---	---	PASS
	Pb	OL	---	5521##	
	Hg	BL	---	---	
	Cr(VI)	BL	---	---	
	PBBs	---	---	---	
	PBDEs	---	---	---	
	DBP	---	---	---	
	BBP	---	---	---	
	DEHP	---	---	---	
DIBP	---	---	---		

Part No	Test Item	Results of EDXRF	Screening Result of PHTH	Result of Wet Chemical Testing (mg/kg)	Conclusion
103	Cd	BL	---	---	PASS
	Pb	BL	---	---	
	Hg	BL	---	---	
	Cr(VI)	BL	---	---	
	PBBs	---	---	---	
	PBDEs	---	---	---	
	DBP	---	---	---	
	BBP	---	---	---	
	DEHP	---	---	---	
DIBP	---	---	---		
104	Cd	BL	---	---	PASS
	Pb	BL	---	---	
	Hg	BL	---	---	
	Cr(VI)	BL	---	---	
	PBBs	---	---	---	
	PBDEs	---	---	---	
	DBP	---	---	---	
	BBP	---	---	---	
	DEHP	---	---	---	
DIBP	---	---	---		
105	Cd	BL	---	---	PASS
	Pb	BL	---	---	
	Hg	BL	---	---	
	Cr(VI)	BL	---	---	
	PBBs	BL	---	---	
	PBDEs	BL	---	---	
	DBP	---	BL	---	
	BBP	---	BL	---	
	DEHP	---	BL	---	
DIBP	---	BL	---		

Part No	Test Item	Results of EDXRF	Screening Result of PHTH	Result of Wet Chemical Testing (mg/kg)	Conclusion
106	Cd	BL	---	---	PASS
	Pb	BL	---	---	
	Hg	BL	---	---	
	Cr(VI)	BL	---	---	
	PBBs	BL	---	--	
	PBDEs	BL	---	--	
	DBP	---	BL	---	
	BBP	---	BL	---	
	DEHP	---	BL	---	
DIBP	---	BL	---		
107	Cd	BL	---	---	PASS
	Pb	BL	---	---	
	Hg	BL	---	---	
	Cr(VI)	BL	---	---	
	PBBs	BL	---	---	
	PBDEs	BL	---	---	
	DBP	---	BL	---	
	BBP	---	BL	---	
	DEHP	---	BL	---	
DIBP	---	BL	---		
108	Cd	BL	---	---	PASS
	Pb	BL	---	---	
	Hg	BL	---	---	
	Cr(VI)	BL	---	---	
	PBBs	BL	---	---	
	PBDEs	BL	---	---	
	DBP	---	BL	---	
	BBP	---	BL	---	
	DEHP	---	BL	---	
DIBP	---	BL	---		

Part No	Test Item	Results of EDXRF	Screening Result of PHTH	Result of Wet Chemical Testing (mg/kg)	Conclusion
109	Cd	BL	---	---	PASS
	Pb	BL	---	---	
	Hg	BL	---	---	
	Cr(VI)	BL	---	---	
	PBBs	BL	---	---	
	PBDEs	BL	---	---	
	DBP	---	BL	---	
	BBP	---	BL	---	
	DEHP	---	BL	---	
DIBP	---	BL	---		
110	Cd	BL	---	---	PASS
	Pb	BL	---	---	
	Hg	BL	---	---	
	Cr(VI)	BL	---	---	
	PBBs	BL	---	---	
	PBDEs	BL	---	---	
	DBP	---	BL	---	
	BBP	---	BL	---	
	DEHP	---	BL	---	
DIBP	---	BL	---		
111	Cd	BL	---	---	PASS
	Pb	BL	---	---	
	Hg	BL	---	---	
	Cr(VI)	BL	---	---	
	PBBs	BL	---	---	
	PBDEs	BL	---	---	
	DBP	---	BL	---	
	BBP	---	BL	---	
	DEHP	---	BL	---	
DIBP	---	BL	---		

Part No	Test Item	Results of EDXRF	Screening Result of PHTH	Result of Wet Chemical Testing (mg/kg)	Conclusion
112	Cd	BL	---	---	PASS
	Pb	BL	---	---	
	Hg	BL	---	---	
	Cr(VI)	BL	---	---	
	PBBs	BL	---	---	
	PBDEs	BL	---	---	
	DBP	---	BL	---	
	BBP	---	BL	---	
	DEHP	---	BL	---	
DIBP	---	BL	---		
113	Cd	BL	---	---	PASS
	Pb	BL	---	---	
	Hg	BL	---	---	
	Cr(VI)	BL	---	---	
	PBBs	BL	---	---	
	PBDEs	BL	---	---	
	DBP	---	BL	---	
	BBP	---	BL	---	
	DEHP	---	BL	---	
DIBP	---	BL	---		
114	Cd	BL	---	---	PASS
	Pb	BL	---	---	
	Hg	BL	---	---	
	Cr(VI)	BL	---	---	
	PBBs	BL	---	---	
	PBDEs	BL	---	---	
	DBP	---	BL	---	
	BBP	---	BL	---	
	DEHP	---	BL	---	
DIBP	---	BL	---		

Part No	Test Item	Results of EDXRF	Screening Result of PHTH	Result of Wet Chemical Testing (mg/kg)	Conclusion
115	Cd	BL	---	---	PASS
	Pb	BL	---	---	
	Hg	BL	---	---	
	Cr(VI)	BL	---	---	
	PBBs	---	---	---	
	PBDEs	---	---	---	
	DBP	---	---	---	
	BBP	---	---	---	
	DEHP	---	---	---	
DIBP	---	---	---		
116	Cd	BL	---	---	PASS
	Pb	BL	---	---	
	Hg	BL	---	---	
	Cr(VI)	BL	---	---	
	PBBs	---	---	---	
	PBDEs	---	---	---	
	DBP	---	---	---	
	BBP	---	---	---	
	DEHP	---	---	---	
DIBP	---	---	---		
117	Cd	BL	---	---	PASS
	Pb	BL	---	---	
	Hg	BL	---	---	
	Cr(VI)	BL	---	---	
	PBBs	BL	---	---	
	PBDEs	BL	---	---	
	DBP	---	BL	---	
	BBP	---	BL	---	
	DEHP	---	BL	---	
DIBP	---	BL	---		

Part No	Test Item	Results of EDXRF	Screening Result of PHTH	Result of Wet Chemical Testing (mg/kg)	Conclusion
118	Cd	BL	---	---	PASS
	Pb	BL	---	---	
	Hg	BL	---	---	
	Cr(VI)	BL	---	---	
	PBBs	BL	---	---	
	PBDEs	BL	---	---	
	DBP	---	BL	---	
	BBP	---	BL	---	
	DEHP	---	BL	---	
DIBP	---	BL	---		
119	Cd	BL	---	---	PASS
	Pb	BL	---	---	
	Hg	BL	---	---	
	Cr(VI)	BL	---	---	
	PBBs	BL	---	---	
	PBDEs	BL	---	---	
	DBP	---	BL	---	
	BBP	---	BL	---	
	DEHP	---	BL	---	
DIBP	---	BL	---		
120	Cd	BL	---	---	PASS
	Pb	BL	---	---	
	Hg	BL	---	---	
	Cr(VI)	BL	---	---	
	PBBs	BL	---	---	
	PBDEs	BL	---	---	
	DBP	---	BL	---	
	BBP	---	BL	---	
	DEHP	---	BL	---	
DIBP	---	BL	---		

Part No	Test Item	Results of EDXRF	Screening Result of PHTH	Result of Wet Chemical Testing (mg/kg)	Conclusion
121	Cd	BL	---	---	PASS
	Pb	BL	---	---	
	Hg	BL	---	---	
	Cr(VI)	BL	---	---	
	PBBs	BL	---	---	
	PBDEs	BL	---	---	
	DBP	---	BL	---	
	BBP	---	BL	---	
	DEHP	---	BL	---	
DIBP	---	BL	---		
122	Cd	BL	---	---	PASS
	Pb	BL	---	---	
	Hg	BL	---	---	
	Cr(VI)	BL	---	---	
	PBBs	BL	---	---	
	PBDEs	BL	---	---	
	DBP	---	BL	---	
	BBP	---	BL	---	
	DEHP	---	BL	---	
DIBP	---	BL	---		
123	Cd	BL	---	---	PASS
	Pb	BL	---	---	
	Hg	BL	---	---	
	Cr(VI)	BL	---	---	
	PBBs	BL	---	---	
	PBDEs	BL	---	---	
	DBP	---	BL	---	
	BBP	---	BL	---	
	DEHP	---	BL	---	
DIBP	---	BL	---		

Part No	Test Item	Results of EDXRF	Screening Result of PHTH	Result of Wet Chemical Testing (mg/kg)	Conclusion
124	Cd	BL	---	---	PASS
	Pb	BL	---	---	
	Hg	BL	---	---	
	Cr(VI)	BL	---	---	
	PBBs	BL	---	---	
	PBDEs	BL	---	---	
	DBP	---	BL	---	
	BBP	---	BL	---	
	DEHP	---	BL	---	
DIBP	---	BL	---		
125	Cd	BL	---	---	PASS
	Pb	BL	---	---	
	Hg	BL	---	---	
	Cr(VI)	BL	---	---	
	PBBs	BL	---	---	
	PBDEs	BL	---	---	
	DBP	---	BL	---	
	BBP	---	BL	---	
	DEHP	---	BL	---	
DIBP	---	BL	---		
126	Cd	BL	---	---	PASS
	Pb	BL	---	---	
	Hg	BL	---	---	
	Cr(VI)	BL	---	---	
	PBBs	BL	---	---	
	PBDEs	BL	---	---	
	DBP	---	BL	---	
	BBP	---	BL	---	
	DEHP	---	BL	---	
DIBP	---	BL	---		

Part No	Test Item	Results of EDXRF	Screening Result of PHTH	Result of Wet Chemical Testing (mg/kg)	Conclusion
127	Cd	BL	---	---	PASS
	Pb	BL	---	---	
	Hg	BL	---	---	
	Cr(VI)	BL	---	---	
	PBBs	BL	---	---	
	PBDEs	BL	---	---	
	DBP	---	BL	---	
	BBP	---	BL	---	
	DEHP	---	BL	---	
DIBP	---	BL	---		
128	Cd	BL	---	---	PASS
	Pb	BL	---	---	
	Hg	BL	---	---	
	Cr(VI)	BL	---	---	
	PBBs	BL	---	---	
	PBDEs	BL	---	---	
	DBP	---	BL	---	
	BBP	---	BL	---	
	DEHP	---	BL	---	
DIBP	---	BL	---		
129	Cd	BL	---	---	PASS
	Pb	BL	---	---	
	Hg	BL	---	---	
	Cr(VI)	BL	---	---	
	PBBs	BL	---	---	
	PBDEs	BL	---	---	
	DBP	---	BL	---	
	BBP	---	BL	---	
	DEHP	---	BL	---	
DIBP	---	BL	---		

Part No	Test Item	Results of EDXRF	Screening Result of PHTH	Result of Wet Chemical Testing (mg/kg)	Conclusion
130	Cd	BL	---	---	PASS
	Pb	BL	---	---	
	Hg	BL	---	---	
	Cr(VI)	BL	---	---	
	PBBs	BL	---	---	
	PBDEs	BL	---	---	
	DBP	---	BL	---	
	BBP	---	BL	---	
	DEHP	---	BL	---	
DIBP	---	BL	---		
131	Cd	BL	---	---	PASS
	Pb	BL	---	---	
	Hg	BL	---	---	
	Cr(VI)	BL	---	---	
	PBBs	BL	---	---	
	PBDEs	BL	---	---	
	DBP	---	BL	---	
	BBP	---	BL	---	
	DEHP	---	BL	---	
DIBP	---	BL	---		
132	Cd	BL	---	---	PASS
	Pb	BL	---	---	
	Hg	BL	---	---	
	Cr(VI)	BL	---	---	
	PBBs	BL	---	---	
	PBDEs	BL	---	---	
	DBP	---	BL	---	
	BBP	---	BL	---	
	DEHP	---	BL	---	
DIBP	---	BL	---		

Part No	Test Item	Results of EDXRF	Screening Result of PHTH	Result of Wet Chemical Testing (mg/kg)	Conclusion
133	Cd	BL	---	---	PASS
	Pb	BL	---	---	
	Hg	BL	---	---	
	Cr(VI)	BL	---	---	
	PBBs	BL	---	---	
	PBDEs	BL	---	---	
	DBP	---	BL	---	
	BBP	---	BL	---	
	DEHP	---	BL	---	
DIBP	---	BL	---		
134	Cd	BL	---	---	PASS
	Pb	BL	---	---	
	Hg	BL	---	---	
	Cr(VI)	BL	---	---	
	PBBs	---	---	---	
	PBDEs	---	---	---	
	DBP	---	---	---	
	BBP	---	---	---	
	DEHP	---	---	---	
DIBP	---	---	---		
135	Cd	BL	---	---	PASS
	Pb	BL	---	---	
	Hg	BL	---	---	
	Cr(VI)	BL	---	---	
	PBBs	BL	---	---	
	PBDEs	BL	---	---	
	DBP	---	BL	---	
	BBP	---	BL	---	
	DEHP	---	BL	---	
DIBP	---	BL	---		

Part No	Test Item	Results of EDXRF	Screening Result of PHTH	Result of Wet Chemical Testing (mg/kg)	Conclusion
136	Cd	BL	---	---	PASS
	Pb	BL	---	---	
	Hg	BL	---	---	
	Cr(VI)	BL	---	---	
	PBBs	BL	---	---	
	PBDEs	BL	---	---	
	DBP	---	BL	---	
	BBP	---	BL	---	
	DEHP	---	BL	---	
DIBP	---	BL	---		
137	Cd	BL	---	---	PASS
	Pb	BL	---	---	
	Hg	BL	---	---	
	Cr(VI)	BL	---	---	
	PBBs	BL	---	---	
	PBDEs	BL	---	---	
	DBP	---	BL	---	
	BBP	---	BL	---	
	DEHP	---	BL	---	
DIBP	---	BL	---		
138	Cd	BL	---	---	PASS
	Pb	BL	---	---	
	Hg	BL	---	---	
	Cr(VI)	BL	---	---	
	PBBs	BL	---	---	
	PBDEs	BL	---	---	
	DBP	---	BL	---	
	BBP	---	BL	---	
	DEHP	---	BL	---	
DIBP	---	BL	---		

Part No	Test Item	Results of EDXRF	Screening Result of PHTH	Result of Wet Chemical Testing (mg/kg)	Conclusion
139	Cd	BL	---	---	PASS
	Pb	BL	---	---	
	Hg	BL	---	---	
	Cr(VI)	BL	---	---	
	PBBs	BL	---	---	
	PBDEs	BL	---	---	
	DBP	---	BL	---	
	BBP	---	BL	---	
	DEHP	---	BL	---	
DIBP	---	BL	---		
140	Cd	BL	---	---	PASS
	Pb	BL	---	---	
	Hg	BL	---	---	
	Cr(VI)	BL	---	---	
	PBBs	BL	---	---	
	PBDEs	BL	---	---	
	DBP	---	BL	---	
	BBP	---	BL	---	
	DEHP	---	BL	---	
DIBP	---	BL	---		
141	Cd	BL	---	---	PASS
	Pb	BL	---	---	
	Hg	BL	---	---	
	Cr(VI)	BL	---	---	
	PBBs	---	---	---	
	PBDEs	---	---	---	
	DBP	---	---	---	
	BBP	---	---	---	
	DEHP	---	---	---	
DIBP	---	---	---		

Part No	Test Item	Results of EDXRF	Screening Result of PHTH	Result of Wet Chemical Testing (mg/kg)	Conclusion
142	Cd	BL	---	---	PASS
	Pb	BL	---	---	
	Hg	BL	---	---	
	Cr(VI)	BL	---	---	
	PBBs	BL	---	---	
	PBDEs	BL	---	---	
	DBP	---	BL	---	
	BBP	---	BL	---	
	DEHP	---	BL	---	
DIBP	---	BL	---		
143	Cd	BL	---	---	PASS
	Pb	BL	---	---	
	Hg	BL	---	---	
	Cr(VI)	BL	---	---	
	PBBs	IN	---	ND	
	PBDEs	IN	---	ND	
	DBP	---	BL	---	
	BBP	---	BL	---	
	DEHP	---	BL	---	
DIBP	---	BL	---		
144	Cd	BL	---	---	PASS
	Pb	BL	---	---	
	Hg	BL	---	---	
	Cr(VI)	BL	---	---	
	PBBs	BL	---	---	
	PBDEs	BL	---	---	
	DBP	---	BL	---	
	BBP	---	BL	---	
	DEHP	---	BL	---	
DIBP	---	BL	---		

Part No	Test Item	Results of EDXRF	Screening Result of PHTH	Result of Wet Chemical Testing (mg/kg)	Conclusion
145	Cd	BL	---	---	PASS
	Pb	BL	---	---	
	Hg	BL	---	---	
	Cr(VI)	BL	---	---	
	PBBs	BL	---	---	
	PBDEs	BL	---	---	
	DBP	---	IN	310	
	BBP	---	BL	---	
	DEHP	---	BL	---	
DIBP	---	BL	---		
146	Cd	BL	---	---	PASS
	Pb	BL	---	---	
	Hg	BL	---	---	
	Cr(VI)	BL	---	---	
	PBBs	BL	---	---	
	PBDEs	BL	---	---	
	DBP	---	IN	273	
	BBP	---	BL	---	
	DEHP	---	BL	---	
DIBP	---	BL	---		
147	Cd	BL	---	---	PASS
	Pb	BL	---	---	
	Hg	BL	---	---	
	Cr(VI)	BL	---	---	
	PBBs	BL	---	---	
	PBDEs	BL	---	---	
	DBP	---	IN	550	
	BBP	---	BL	---	
	DEHP	---	BL	---	
DIBP	---	BL	---		

Part No	Test Item	Results of EDXRF	Screening Result of PHTH	Result of Wet Chemical Testing (mg/kg)	Conclusion
148	Cd	BL	---	---	PASS
	Pb	BL	---	---	
	Hg	BL	---	---	
	Cr(VI)	BL	---	---	
	PBBs	BL	---	---	
	PBDEs	BL	---	---	
	DBP	---	IN	173	
	BBP	---	BL	---	
	DEHP	---	BL	---	
DIBP	---	BL	---		
149	Cd	BL	---	---	PASS
	Pb	BL	---	---	
	Hg	BL	---	---	
	Cr(VI)	BL	---	---	
	PBBs	BL	---	---	
	PBDEs	BL	---	---	
	DBP	---	BL	---	
	BBP	---	BL	---	
	DEHP	---	BL	---	
DIBP	---	BL	---		
150	Cd	BL	---	---	PASS
	Pb	BL	---	---	
	Hg	BL	---	---	
	Cr(VI)	BL	---	---	
	PBBs	---	---	---	
	PBDEs	---	---	---	
	DBP	---	---	---	
	BBP	---	---	---	
	DEHP	---	---	---	
DIBP	---	---	---		

Part No	Test Item	Results of EDXRF	Screening Result of PHTH	Result of Wet Chemical Testing (mg/kg)	Conclusion
151	Cd	IN	---	81	PASS
	Pb	OL	---	29498##	
	Hg	BL	---	---	
	Cr(VI)	BL	---	---	
	PBBs	---	---	---	
	PBDEs	---	---	---	
	DBP	---	---	---	
	BBP	---	---	---	
	DEHP	---	---	---	
DIBP	---	---	---		
152	Cd	BL	---	---	PASS
	Pb	BL	---	---	
	Hg	BL	---	---	
	Cr(VI)	BL	---	---	
	PBBs	---	---	---	
	PBDEs	---	---	---	
	DBP	---	---	---	
	BBP	---	---	---	
	DEHP	---	---	---	
DIBP	---	---	---		
153	Cd	BL	---	---	PASS
	Pb	BL	---	---	
	Hg	BL	---	---	
	Cr(VI)	BL	---	---	
	PBBs	IN	---	ND	
	PBDEs	IN	---	ND	
	DBP	---	BL	---	
	BBP	---	BL	---	
	DEHP	---	BL	---	
DIBP	---	BL	---		

Part No	Test Item	Results of EDXRF	Screening Result of PHTH	Result of Wet Chemical Testing (mg/kg)	Conclusion
154	Cd	BL	---	---	PASS
	Pb	BL	---	---	
	Hg	BL	---	---	
	Cr(VI)	BL	---	---	
	PBBs	BL	---	---	
	PBDEs	BL	---	---	
	DBP	---	BL	---	
	BBP	---	BL	---	
	DEHP	---	BL	---	
DIBP	---	BL	---		
155	Cd	BL	---	---	PASS
	Pb	BL	---	---	
	Hg	BL	---	---	
	Cr(VI)	BL	---	---	
	PBBs	BL	---	---	
	PBDEs	BL	---	---	
	DBP	---	BL	---	
	BBP	---	BL	---	
	DEHP	---	BL	---	
DIBP	---	BL	---		
156	Cd	BL	---	---	PASS
	Pb	BL	---	---	
	Hg	BL	---	---	
	Cr(VI)	IN	---	Negative	
	PBBs	---	---	---	
	PBDEs	---	---	---	
	DBP	---	---	---	
	BBP	---	---	---	
	DEHP	---	---	---	
DIBP	---	---	---		

Part No	Test Item	Results of EDXRF	Screening Result of PHTH	Result of Wet Chemical Testing (mg/kg)	Conclusion
157	Cd	BL	---	---	PASS
	Pb	BL	---	---	
	Hg	BL	---	---	
	Cr(VI)	BL	---	---	
	PBBs	BL	---	---	
	PBDEs	BL	---	---	
	DBP	---	BL	---	
	BBP	---	BL	---	
	DEHP	---	BL	---	
DIBP	---	BL	---		
158	Cd	BL	---	---	PASS
	Pb	BL	---	---	
	Hg	BL	---	---	
	Cr(VI)	BL	---	---	
	PBBs	IN	---	ND	
	PBDEs	IN	---	ND	
	DBP	---	BL	---	
	BBP	---	BL	---	
	DEHP	---	BL	---	
DIBP	---	BL	---		
159	Cd	BL	---	---	PASS
	Pb	BL	---	---	
	Hg	BL	---	---	
	Cr(VI)	BL	---	---	
	PBBs	BL	---	---	
	PBDEs	BL	---	---	
	DBP	---	BL	---	
	BBP	---	BL	---	
	DEHP	---	BL	---	
DIBP	---	BL	---		

Part No	Test Item	Results of EDXRF	Screening Result of PHTH	Result of Wet Chemical Testing (mg/kg)	Conclusion
160	Cd	BL	---	---	PASS
	Pb	BL	---	---	
	Hg	BL	---	---	
	Cr(VI)	BL	---	---	
	PBBs	BL	---	---	
	PBDEs	BL	---	---	
	DBP	---	BL	---	
	BBP	---	BL	---	
	DEHP	---	BL	---	
DIBP	---	BL	---		
161	Cd	BL	---	---	PASS
	Pb	BL	---	---	
	Hg	BL	---	---	
	Cr(VI)	BL	---	---	
	PBBs	BL	---	---	
	PBDEs	BL	---	---	
	DBP	---	BL	---	
	BBP	---	BL	---	
	DEHP	---	BL	---	
DIBP	---	BL	---		
162	Cd	BL	---	---	PASS
	Pb	BL	---	---	
	Hg	BL	---	---	
	Cr(VI)	BL	---	---	
	PBBs	BL	---	---	
	PBDEs	BL	---	---	
	DBP	---	BL	---	
	BBP	---	BL	---	
	DEHP	---	BL	---	
DIBP	---	BL	---		

Part No	Test Item	Results of EDXRF	Screening Result of PHTH	Result of Wet Chemical Testing (mg/kg)	Conclusion
163	Cd	BL	---	---	PASS
	Pb	BL	---	---	
	Hg	BL	---	---	
	Cr(VI)	BL	---	---	
	PBBs	BL	---	---	
	PBDEs	BL	---	---	
	DBP	---	BL	---	
	BBP	---	BL	---	
	DEHP	---	BL	---	
DIBP	---	BL	---		
164	Cd	BL	---	---	PASS
	Pb	BL	---	---	
	Hg	BL	---	---	
	Cr(VI)	BL	---	---	
	PBBs	IN	---	ND	
	PBDEs	IN	---	ND	
	DBP	---	BL	---	
	BBP	---	BL	---	
	DEHP	---	BL	---	
DIBP	---	BL	---		
165	Cd	BL	---	---	PASS
	Pb	BL	---	---	
	Hg	BL	---	---	
	Cr(VI)	BL	---	---	
	PBBs	---	---	---	
	PBDEs	---	---	---	
	DBP	---	---	---	
	BBP	---	---	---	
	DEHP	---	---	---	
DIBP	---	---	---		

Part No	Test Item	Results of EDXRF	Screening Result of PHTH	Result of Wet Chemical Testing (mg/kg)	Conclusion
166	Cd	BL	---	---	PASS
	Pb	BL	---	---	
	Hg	BL	---	---	
	Cr(VI)	BL	---	---	
	PBBs	BL	---	---	
	PBDEs	BL	---	---	
	DBP	---	BL	---	
	BBP	---	BL	---	
	DEHP	---	BL	---	
DIBP	---	BL	---		
167	Cd	BL	---	---	PASS
	Pb	BL	---	---	
	Hg	BL	---	---	
	Cr(VI)	BL	---	---	
	PBBs	IN	---	ND	
	PBDEs	IN	---	ND	
	DBP	---	BL	---	
	BBP	---	BL	---	
	DEHP	---	BL	---	
DIBP	---	BL	---		
168	Cd	BL	---	---	PASS
	Pb	BL	---	---	
	Hg	BL	---	---	
	Cr(VI)	BL	---	---	
	PBBs	---	---	---	
	PBDEs	---	---	---	
	DBP	---	---	---	
	BBP	---	---	---	
	DEHP	---	---	---	
DIBP	---	---	---		

Part No	Test Item	Results of EDXRF	Screening Result of PHTH	Result of Wet Chemical Testing (mg/kg)	Conclusion
169	Cd	BL	---	---	PASS
	Pb	BL	---	---	
	Hg	BL	---	---	
	Cr(VI)	BL	---	---	
	PBBs	BL	---	---	
	PBDEs	BL	---	---	
	DBP	---	BL	---	
	BBP	---	BL	---	
	DEHP	---	BL	---	
DIBP	---	BL	---		
170	Cd	BL	---	---	PASS
	Pb	BL	---	---	
	Hg	BL	---	---	
	Cr(VI)	BL	---	---	
	PBBs	BL	---	---	
	PBDEs	BL	---	---	
	DBP	---	BL	---	
	BBP	---	BL	---	
	DEHP	---	BL	---	
DIBP	---	BL	---		
171	Cd	BL	---	---	PASS
	Pb	BL	---	---	
	Hg	BL	---	---	
	Cr(VI)	BL	---	---	
	PBBs	BL	---	---	
	PBDEs	BL	---	---	
	DBP	---	BL	---	
	BBP	---	BL	---	
	DEHP	---	BL	---	
DIBP	---	BL	---		

Part No	Test Item	Results of EDXRF	Screening Result of PHTH	Result of Wet Chemical Testing (mg/kg)	Conclusion
172	Cd	BL	---	---	PASS
	Pb	BL	---	---	
	Hg	BL	---	---	
	Cr(VI)	BL	---	---	
	PBBs	---	---	---	
	PBDEs	---	---	---	
	DBP	---	---	---	
	BBP	---	---	---	
	DEHP	---	---	---	
DIBP	---	---	---		
173	Cd	BL	---	---	PASS
	Pb	BL	---	---	
	Hg	BL	---	---	
	Cr(VI)	BL	---	---	
	PBBs	BL	---	---	
	PBDEs	BL	---	---	
	DBP	---	BL	---	
	BBP	---	BL	---	
	DEHP	---	BL	---	
DIBP	---	BL	---		
174	Cd	BL	---	---	PASS
	Pb	BL	---	---	
	Hg	BL	---	---	
	Cr(VI)	BL	---	---	
	PBBs	BL	---	---	
	PBDEs	BL	---	---	
	DBP	---	BL	---	
	BBP	---	BL	---	
	DEHP	---	BL	---	
DIBP	---	BL	---		

Part No	Test Item	Results of EDXRF	Screening Result of PHTH	Result of Wet Chemical Testing (mg/kg)	Conclusion
175	Cd	BL	---	---	PASS
	Pb	BL	---	---	
	Hg	BL	---	---	
	Cr(VI)	BL	---	---	
	PBBs	BL	---	---	
	PBDEs	BL	---	---	
	DBP	---	BL	---	
	BBP	---	BL	---	
	DEHP	---	BL	---	
DIBP	---	BL	---		
176	Cd	BL	---	---	PASS
	Pb	BL	---	---	
	Hg	BL	---	---	
	Cr(VI)	BL	---	---	
	PBBs	BL	---	---	
	PBDEs	BL	---	---	
	DBP	---	BL	---	
	BBP	---	BL	---	
	DEHP	---	BL	---	
DIBP	---	BL	---		
177	Cd	BL	---	---	PASS
	Pb	BL	---	---	
	Hg	BL	---	---	
	Cr(VI)	BL	---	---	
	PBBs	BL	---	---	
	PBDEs	BL	---	---	
	DBP	---	BL	---	
	BBP	---	BL	---	
	DEHP	---	BL	---	
DIBP	---	BL	---		

Part No	Test Item	Results of EDXRF	Screening Result of PHTH	Result of Wet Chemical Testing (mg/kg)	Conclusion
178	Cd	BL	---	---	PASS
	Pb	BL	---	---	
	Hg	BL	---	---	
	Cr(VI)	BL	---	---	
	PBBs	---	---	---	
	PBDEs	---	---	---	
	DBP	---	---	---	
	BBP	---	---	---	
	DEHP	---	---	---	
DIBP	---	---	---		
179	Cd	BL	---	---	PASS
	Pb	BL	---	---	
	Hg	BL	---	---	
	Cr(VI)	BL	---	---	
	PBBs	IN	---	ND	
	PBDEs	IN	---	ND	
	DBP	---	BL	---	
	BBP	---	BL	---	
	DEHP	---	BL	---	
DIBP	---	BL	---		
180	Cd	BL	---	---	PASS
	Pb	BL	---	---	
	Hg	BL	---	---	
	Cr(VI)	BL	---	---	
	PBBs	BL	---	---	
	PBDEs	BL	---	---	
	DBP	---	BL	---	
	BBP	---	BL	---	
	DEHP	---	BL	---	
DIBP	---	BL	---		

Note:

BL = Below Limit

OL= Limit exceeded

--- = No Testing Required

mg/kg = milligram per kilogram

IN = Inconclusive

ND = Not Detected (lower than MDL)

Negative = Result indicates the absence of hexavalent chromium in the tested sample.

= According to the product specification provided from client, specimen No. **35、55、84、85、89、91、94、95、97、102、151** of the submitted sample are copper alloy containing up to 40000 mg/kg Lead by weight which is exempted by RoHS regulatory (Directive 2015/863/EU amending Annex II to Directive 2011/65/EU of The European Parliament and of The Council of 31 March 2015).

Remark:

1. (a) There are the results on total Br while test items on restricted substances are PBBs and PBDEs. There is the result on total Cr while test item on restricted substances is Cr(VI).
- (b) Results are obtained by EDXRF for primary screening, and further chemical testing by ICP-OES (for Cd, Pb, Hg), UV-Vis (for Cr(VI)) and GC-MS (for PBBs, PBDEs) is recommended to be performed if the concentration exceeds the below warning value according to IEC62321-3-1:2013 (unit: mg/kg).

Element	Unit	Polymer	Metal	Composite Material
Cd	mg/kg	$BL \leq (70-3\sigma) < IN < (130+3\sigma) \leq OL$	$BL \leq (70-3\sigma) < IN < (130+3\sigma) \leq OL$	$LOD < IN < (150+3\sigma) \leq OL$
Pb	mg/kg	$BL \leq (700-3\sigma) < IN < (1300+3\sigma) \leq OL$	$BL \leq (700-3\sigma) < IN < (1300+3\sigma) \leq OL$	$BL \leq (500-3\sigma) < IN < (1500+3\sigma) \leq OL$
Hg	mg/kg	$BL \leq (700-3\sigma) < IN < (1300+3\sigma) \leq OL$	$BL \leq (700-3\sigma) < IN < (1300+3\sigma) \leq OL$	$BL \leq (500-3\sigma) < IN < (1500+3\sigma) \leq OL$
Br	mg/kg	$BL \leq (300-3\sigma) < IN$	--	$BL \leq (250-3\sigma) < IN$
Cr	mg/kg	$BL \leq (700-3\sigma) < IN$	$BL \leq (700-3\sigma) < IN$	$BL \leq (500-3\sigma) < IN$

BL = Below Limit

OL = Over Limit

IN = Inconclusive

LOD = Limit of Detection

mg/kg=ppm= milligram per kilogram

- (c) Screening results of PHTH are for hybrid test by GC-MS, and further chemical testing by GC-MS (for DBP, BBP, DEHP and DIBP) are recommended to be performed if the concentration exceeds the below warning value (unit: mg/kg).

Compound	Polymer
DBP	$BL \leq 600 < IN$
BBP	$BL \leq 600 < IN$
DEHP	$BL \leq 600 < IN$
DIBP	$BL \leq 600 < IN$

mg/kg = milligram per kilogram

1% = 10000 mg/kg = 10000 ppm

2. Test Method

Tested Item(s)	Test Method	Measured Equipment(s)
Lead (Pb)	IEC62321-5:2013	ICP-OES
Cadmium (Cd)	IEC62321-5:2013	ICP-OES
Mercury (Hg)	IEC 62321-4:2013+AMD1:2017	ICP-OES
Hexavalent chromium (Cr(VI)) for plastic	IEC62321-7-2:2017 and/or determination of Total Chromium by IEC 62321-5:2013	UV-Vis/ICP-OES
Hexavalent chromium (Cr(VI)) for coating on metals	IEC62321-7-1:2015 and/or determination of Total Chromium by IEC 62321-5:2013	UV-Vis/ICP-OES
Polybrominated Biphenyls (PBBs)	IEC62321-6:2015	GC-MS
Polybrominated Diphenyl Ethers (PBDEs)	IEC62321-6:2015	GC-MS
Phthalates (DBP, BBP, DEHP, DIBP)	IEC62321-8:2017	GC-MS

3. RoHS Requirement

Unit:mg/kg

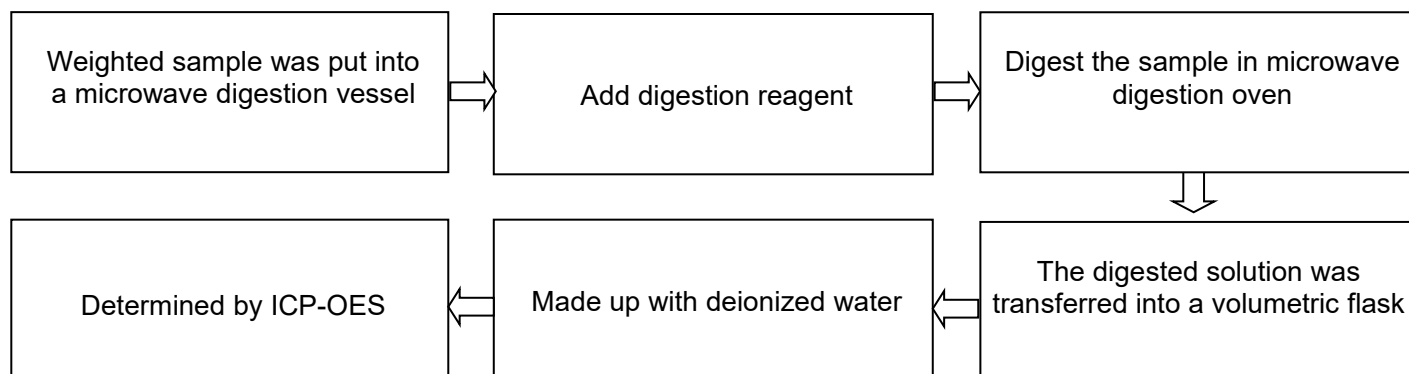
Restricted substances	Cd	Pb	Hg	Cr(VI)	PBBs	PBDEs	BBP	DBP	DEHP	DIBP
MDL	10	10	10	--	100	100	100	100	100	100
RoHS limit	100	1000	1000	1000	1000	1000	1000	1000	1000	1000

MDL of Cr(VI) for polymer, composite and leather sample is 10 mg/kg.

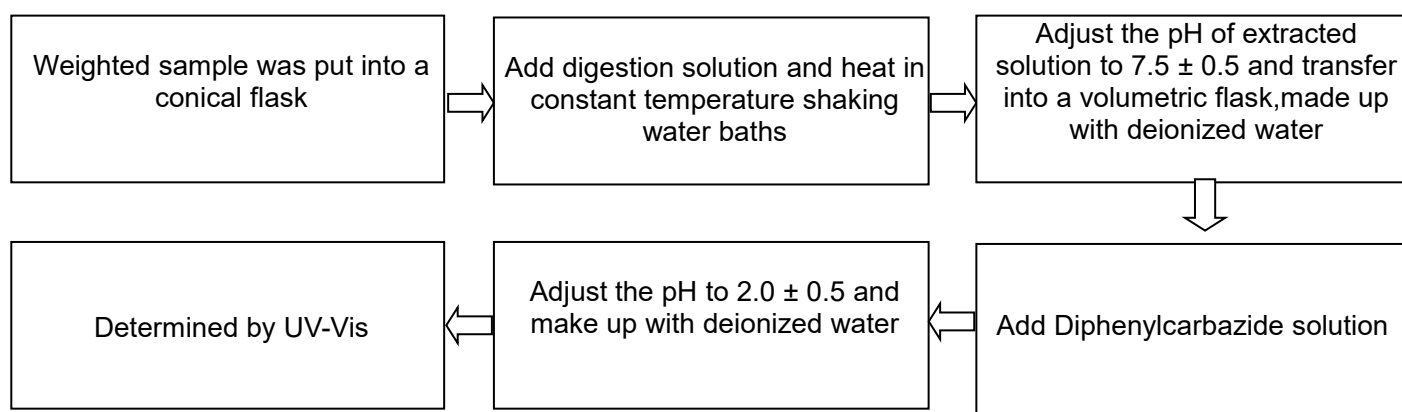
 MDL of Cr(VI) for metal sample is 0.10µg/cm²

4. Measurement Flowchart

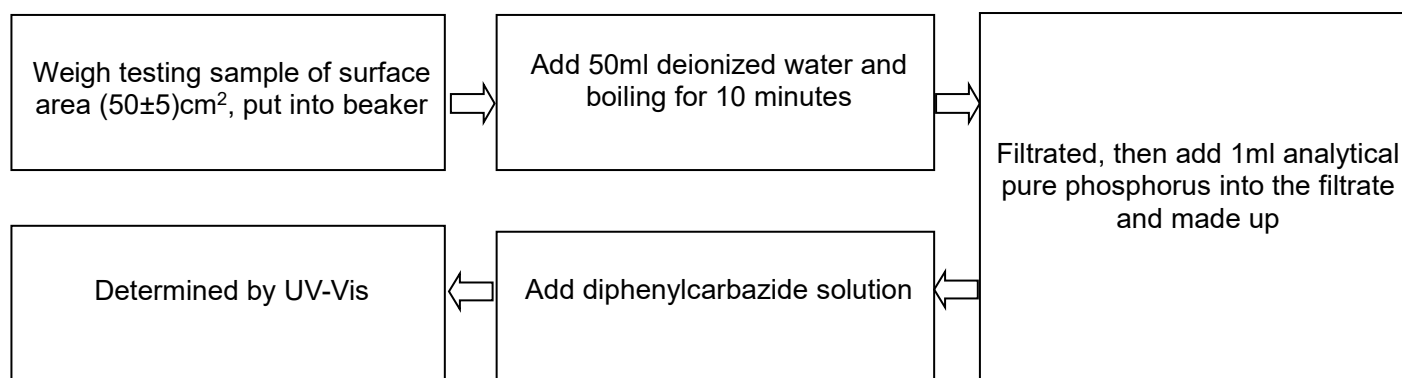
a. Test for Cd / Pb /Hg contents)



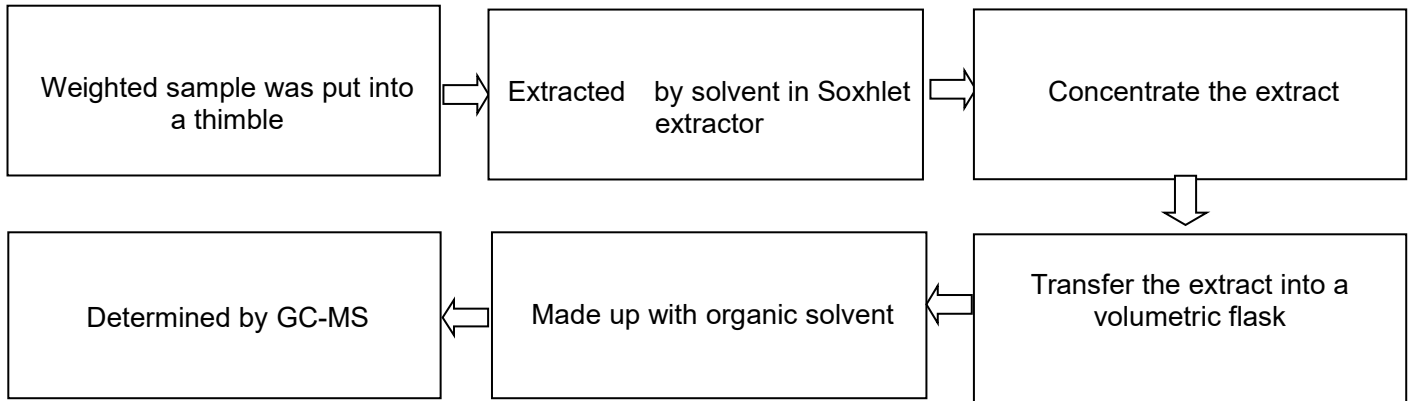
b. Test for Cr(VI) content (for non-metal)



c. Test for Cr(VI) content (for metal)



d. Test for PBBs, PBDEs, DBP, BBP, DEHP, DIBP

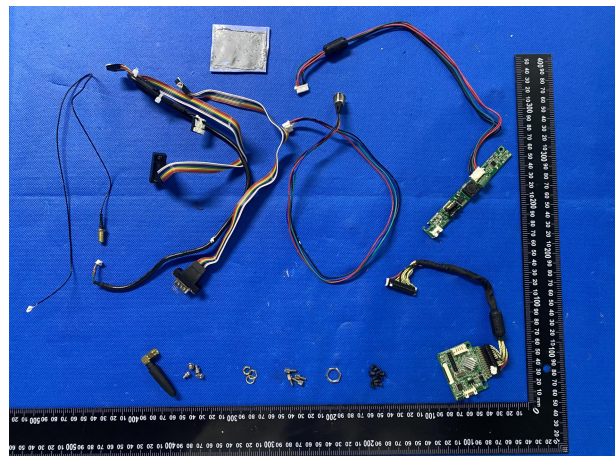
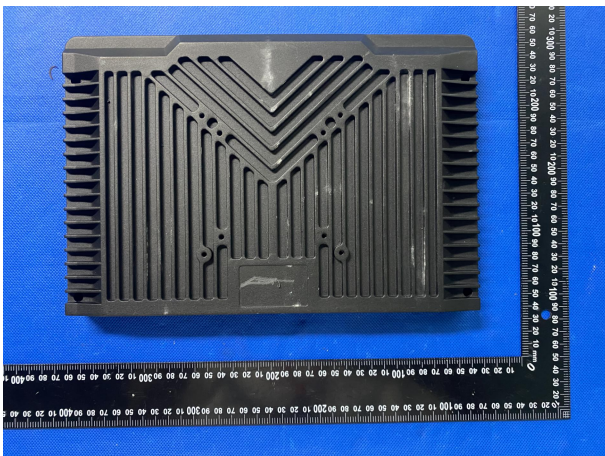
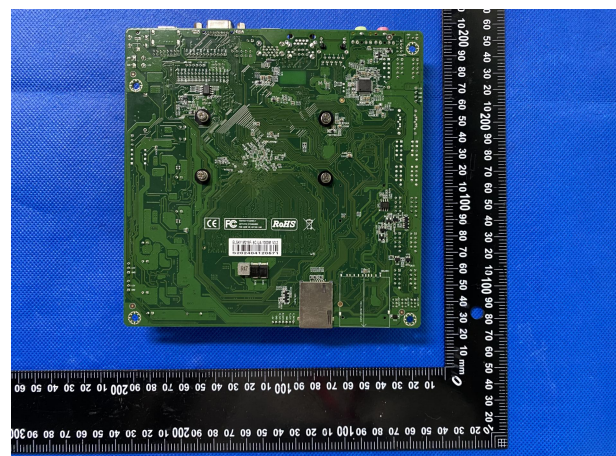
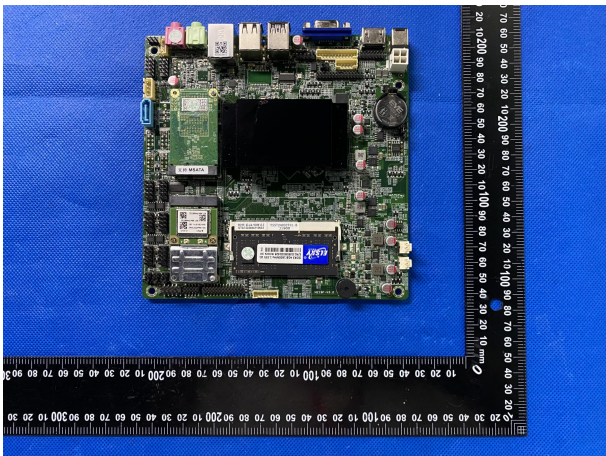


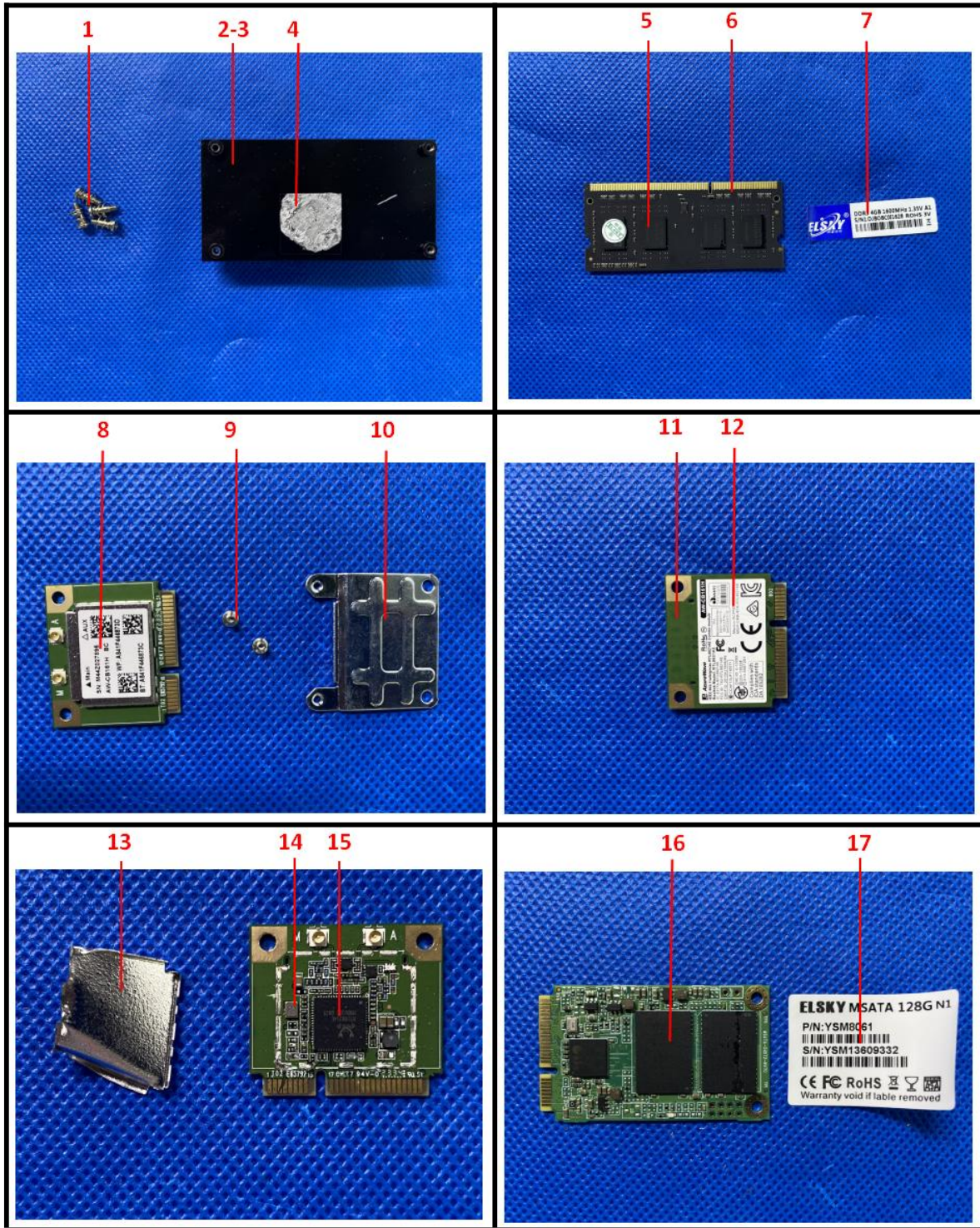
5. Photo(s) of the sample(s)

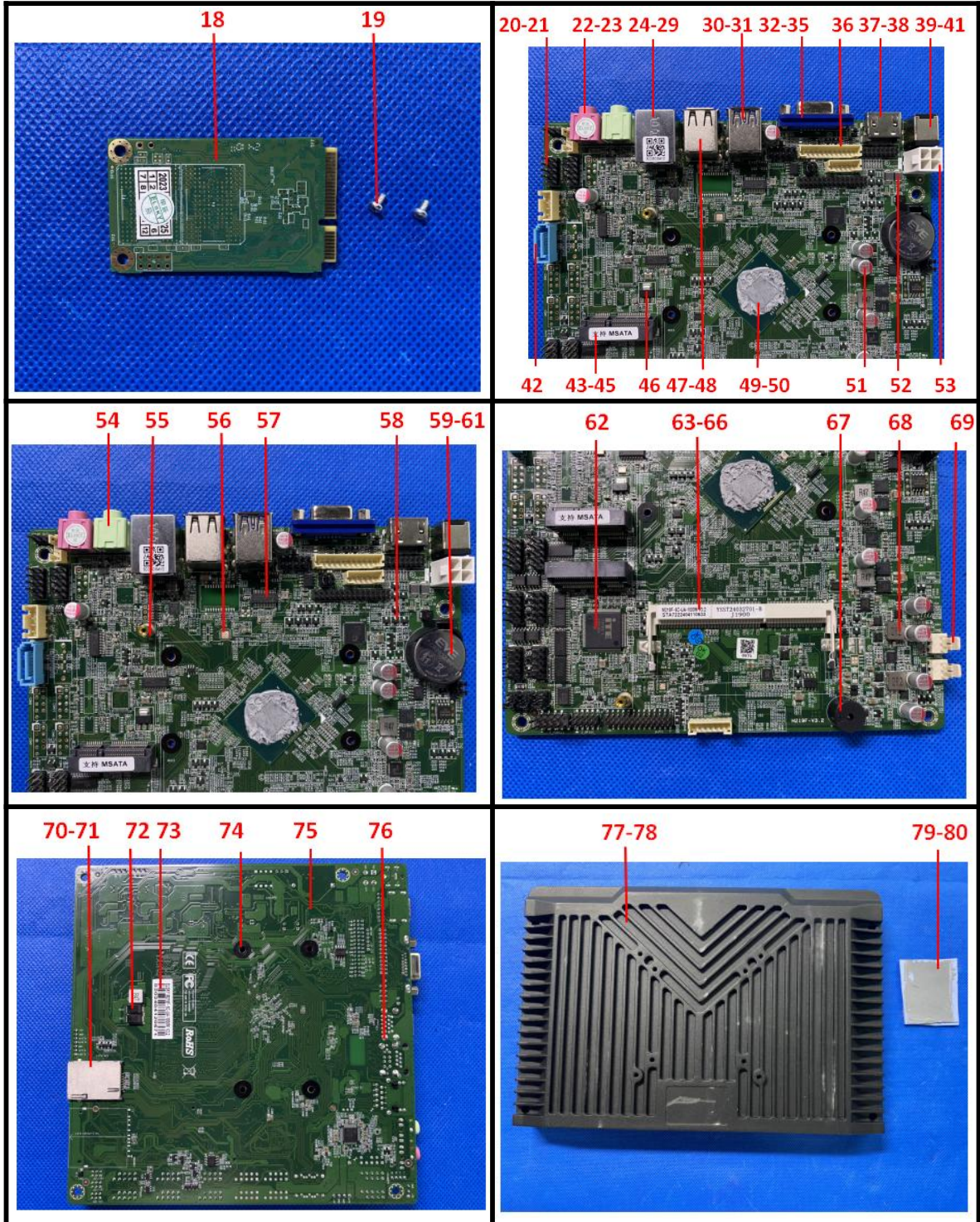
Below are provided photos by the client and do not test:

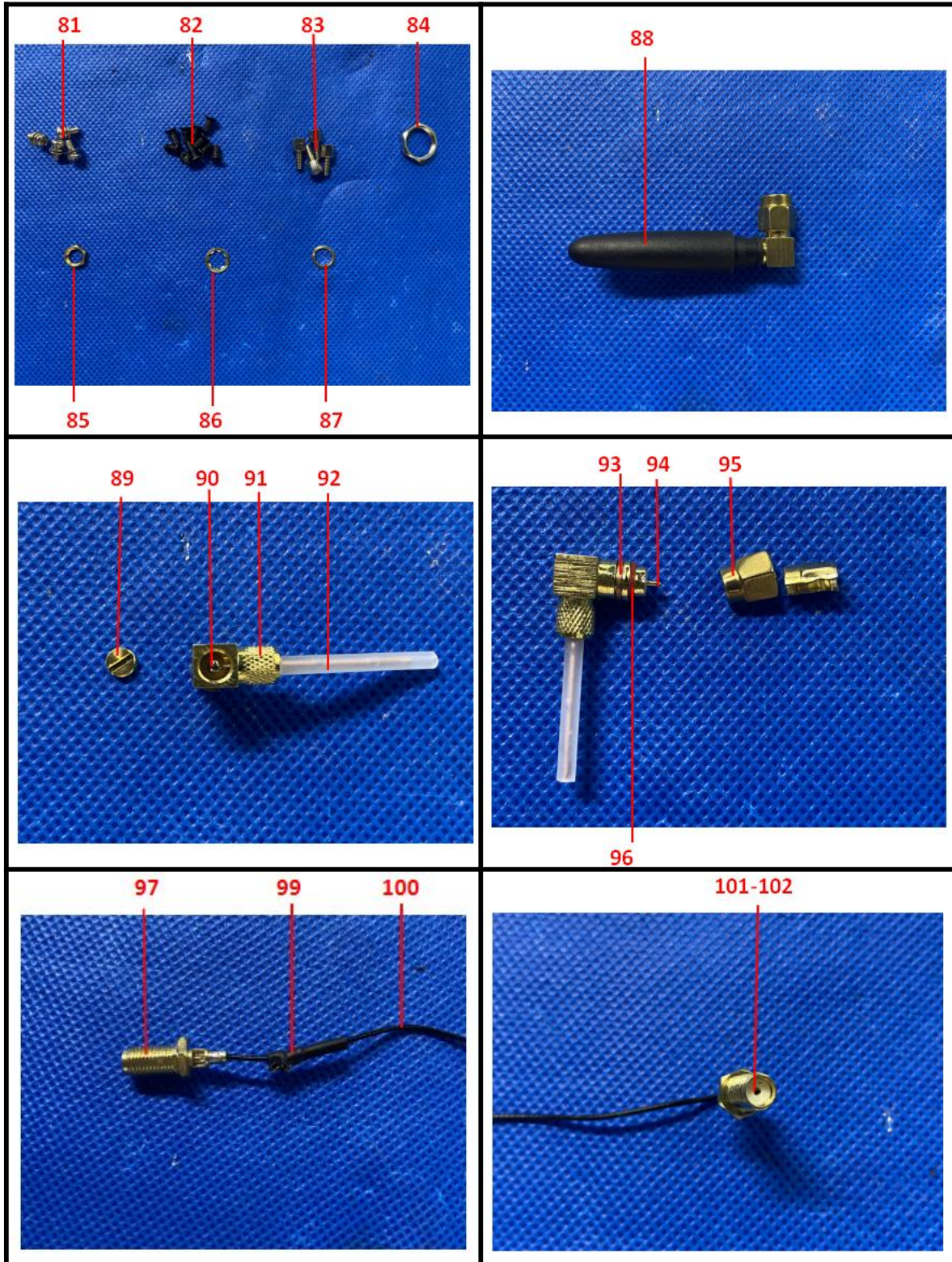


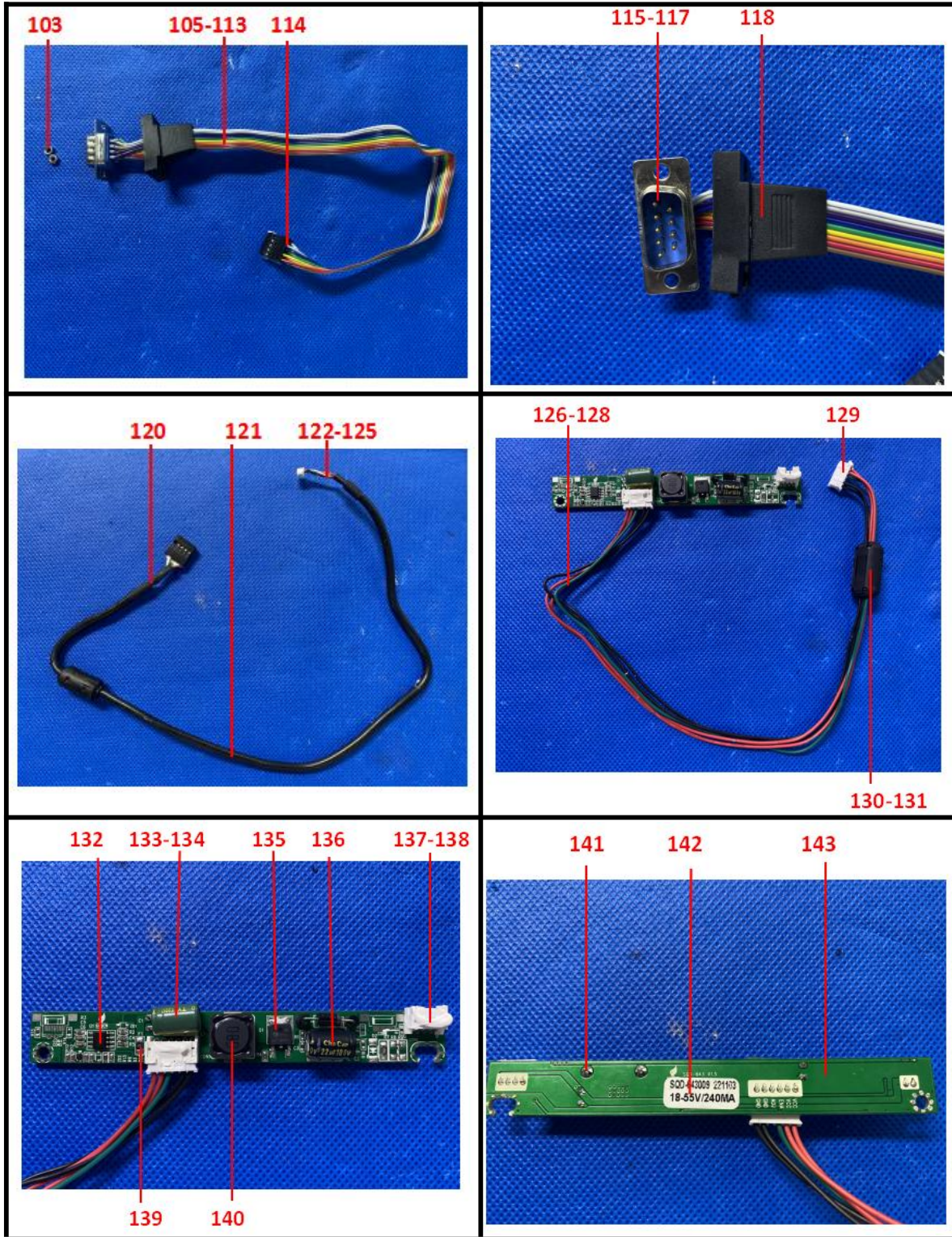
Sample Photo:

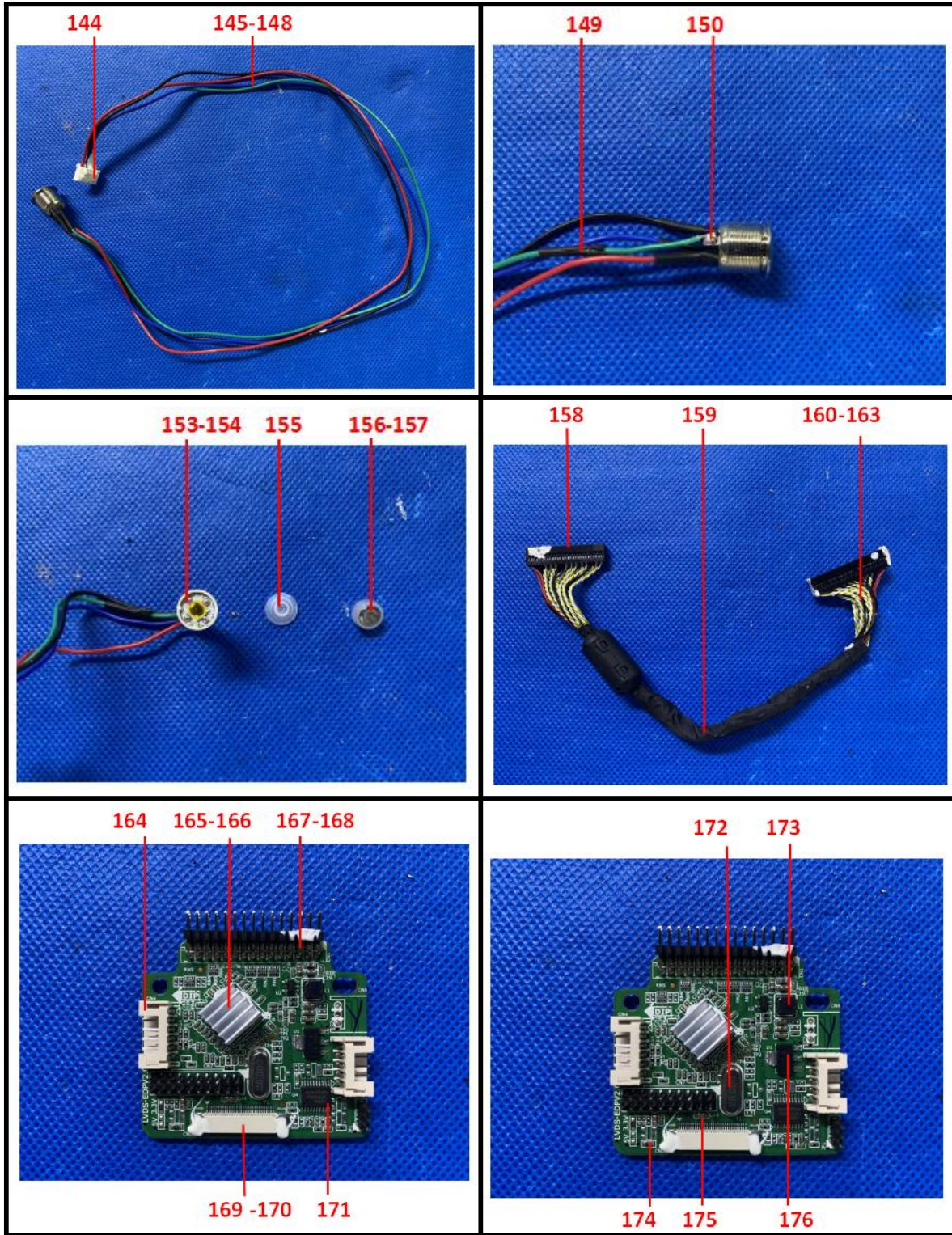


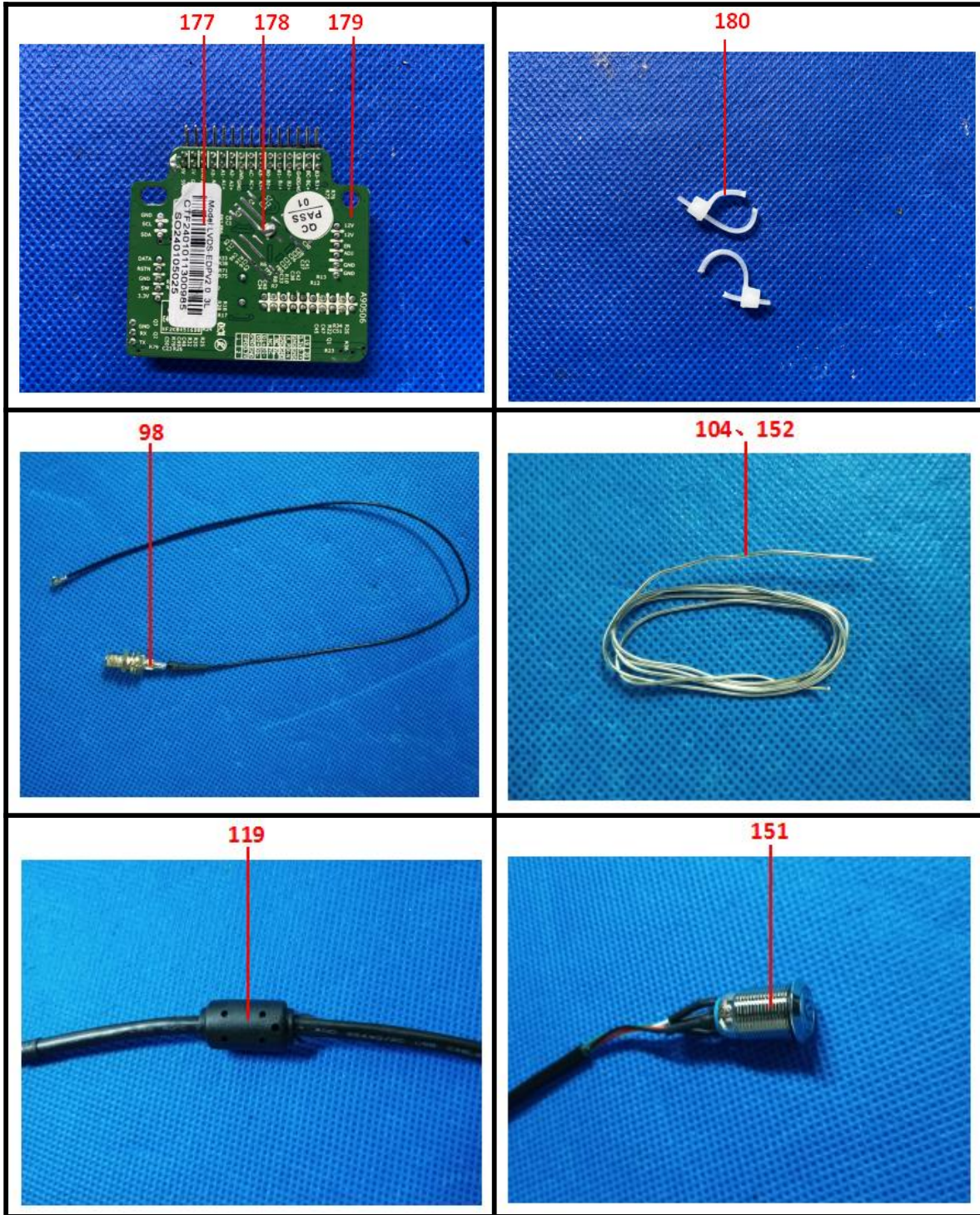












The results of this report apply only to samples received, Without written authorization, any copy of this report for propaganda is invalid.

.....End of Report.....